



Key Person Policy

Intent:

Each child is allocated a key person at their admission and will remain with the same key person throughout their time in each age phase. The main purpose of the Key Person is to bridge the gap from home to nursery school by helping the child to settle into the nursery and make them feel more secure.

A Key Person is responsible for working with their own small group of children, giving them reassurance whenever they need it, helping them to feel safe and cared for and building relationships with their parents.

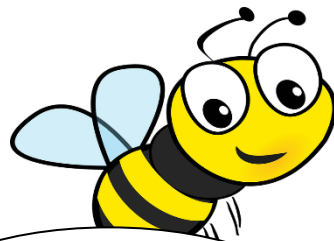
The Key Person will:

- Help the child become familiar with the setting and feel confident and safe within it.
- Develop a genuine bond with children and offer a settled, close relationship.
- Meet the needs of each child in their care and respond sensitively to their feelings, ideas and behaviour.
- Interact and observe the children in their group, planning for their next steps through the child's particular interests.
- Regularly talk to the parents, to get to know and understand the children in their group.
- Work alongside the class teacher to track the children in their group and assess their development, in partnership with the child's parents.
- Contribute to the learning journal (Tapestry) for each child, showing the learning and development.

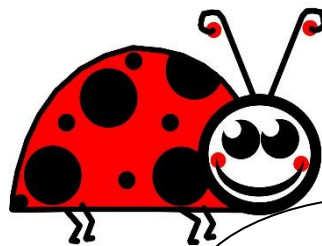
Aims for our children:

- Children become more independent by being able to rely upon a familiar adult for reassurance and comfort.
- Children feel happy and secure with a familiar person, and they will feel more confident to explore and try out new things.
- Children will make progress as their learning will be tailored to their specific needs.
- Children can engage with other adults throughout the day but will always register with their Key Person at the start of each session and at most group time activities

Our Key Person Groups are:



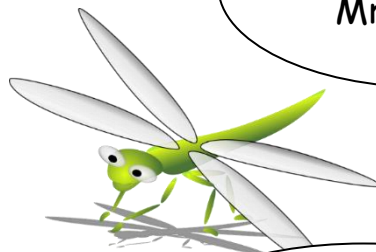
Bumblebees
Mrs. Taylor



Ladybirds
Mrs. Perry



Caterpillars
Mrs. Sajid



Dragonflies
Miss. Sadaf



Dragonfly Nest
Miss. Bowden