

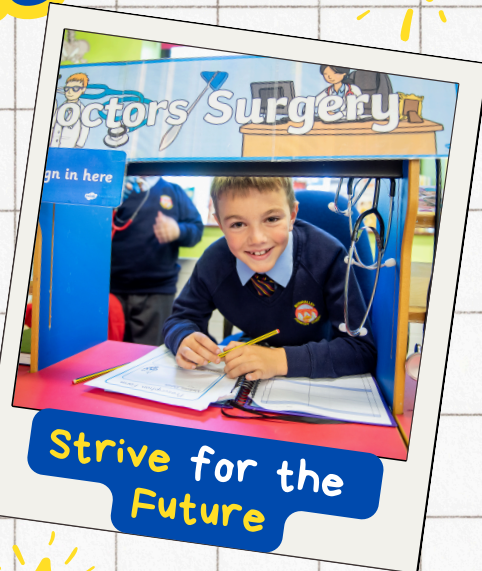
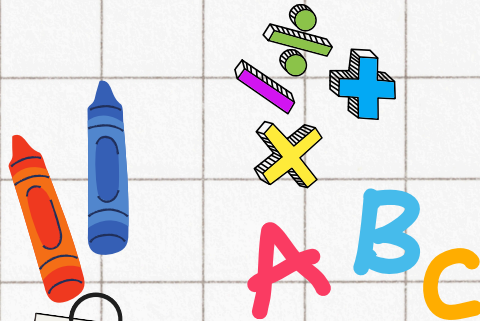


# BUSHVALLEY PRIMARY SCHOOL

## School Development Plan 2025/2026

### OUR SCHOOL VISION

Our future depends on building upon the experiences of the **PAST**, learning from the **PRESENT** and preparing for the challenges of the **FUTURE**.



Strive for the Future



Progress in the Present



Build upon the Past

### WELLBEING

School Wellbeing Champions  
BWDW School Year 3 Action Plan

### OTHER AREAS

PE with Core NI  
P1, P4 & P6 Shared Education  
RE Bibletime Resources

### ICT

New Chromebook ICT Technology  
Safer Schools' App  
Assistive Technology

### WAV

Development of Outdoor Learning  
New Forest School Area

### NUMERACY

New Busy Ants Numeracy Scheme  
School Progression of Numeracy Planning

### WE WILL CONTINUE....

Pupil Voice  
Extra-Curricular Programme  
School Choir  
Languages: Spanish  
P4 Roots of Empathy  
Community Links  
Green Flag: Eco-Schools

### SEND

School Intervention  
School SEND Provision Map  
Graduated Response for SEN Children

### LITERACY

New Guided Reading Books  
New Genres for Creative Writing  
P1-P4 Talk Boost Programme