



On The Vine

FORGIVENESS

Newsletter

St Mary's CE Primary & Nursery School

Summer Half Term I
2026

'Growing Together in God's Love to Achieve Excellence'

Dear Parent

Last term finished with our usual Easter Service at St Mary's Church. We have another busy and fun-packed summer term for our children and families to enjoy. Our Year 6s are in the final preparations for the end of key stage SATs before coaching off to their outward board residential.

We hope that you enjoy this edition of 'On The Vine' where you'll find some of the highlights of school life over the next half term.

St George's Day

As is traditional, members of Girl Guiding or Scouting troops are able to wear their uniform tops to school on St George's Day, **Thursday 23rd April**, if they wish. Please could they wear their usual school uniform skirts or trousers and shoes.



PTA Events:

PTA Cookie/Doughnut Sale

The ever popular cookie/doughnut sale will run again on **Friday 22nd May, 3.15-3.45pm.**



Eco Update

Please continue to recycle used batteries in the entrance of the school office and recycle soft plastics in the bins which are located in the playground.

A reminder that the refill shop will be running on the following dates:

-Wednesday 17th June, 3.15-3.45pm



Please remember to bring cash to make your payments and your refillable containers!

Year 5 Archbishops Award

In the Spring term, Year 5 began embarking on preparations for their Archbishops Award. They have looked at leadership skills and studied inspirational leaders.



After half term the children will be organising their own charity event. We all look forward to seeing what they come up with, more details to follow.

Class Photographs

We have arranged for the photographer to come into school on **Wednesday 29th April** to take class photographs.

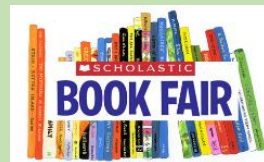


Please could the children wear white shirts with ties or, alternatively, school blue checked dresses with white socks. **No polo shirts please.**

The Nursery children will have their own class photograph taken on **Wednesday morning at 8.50 am**. For those children who do not normally attend a Wednesday morning session but wish to be included in the class photograph, please could they be brought to the main school office for 8:45am. Parents will need to stay until the photograph has been taken. The Nursery class will be photographed first so this should be completed by approximately 9.30 am.

Book Fair

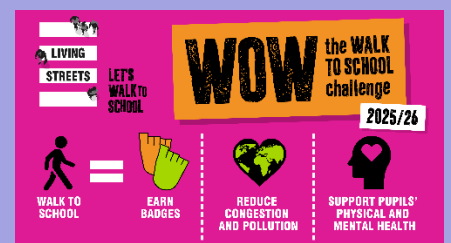
The Scholastic half price Book Fair will be running on **Friday 15th May, 1.45-3pm**. As with previous years, in order to attend, a parent or family member needs to come to the school office to collect their child, supervise them around the Fair (which will be set up in the school hall) and children can then go home with their adults.



Walk to School Week

We will be participating in **Walk to School Week 18th - 22nd May**. A generation ago, 70% of us walked to school - now it's less than half. So Walk to School Week was started to encourage more children to get out of the car and walk to school. Children will get a card to record their walk to school and will receive a sticker for each day they go to school. A letter will follow with further information.

- If you live too far away, perhaps park up a few roads away from school and walk the rest of the way to school.
- Walking to school is a brilliant way to get active and healthy - without even realising you are exercising.



Key dates for Year 6 - SATS and Robinwood

We have some important events coming up for Year 6, firstly SATS. The SATS examinations will run from **Monday 11th May to Thursday 14th May**. All year 6 students are invited to attend the SATS Breakfast Club, Where free toast and juice will be available from 8am in the Year 6 classroom. Please do not book any appointments during this period and as far as possible, ensure full attendance.


**KEEP
CALM**
IT'S ONLY
SATS



The Robinwood residential will take place **Wednesday 20th - Friday 22nd May**. Many thanks for the return of the personal information forms, we will be sending home information regarding purchasing souvenirs via Arbor over the next few weeks.

Notices

Walking through Car Park

When children are entering the school via the main entrance, please remind them to use the marked walk way down the side of the car park, in order to stay safe. Also, please remember to escort your child to the door rather than dropping them off in the car park or playground.



Absence Following Sickness

Please remember that if your child has been sick or had an upset stomach that they need to stay off school for 48 hours after their last bout of sickness. This is because they are most contagious during this period. Many thanks for your support.



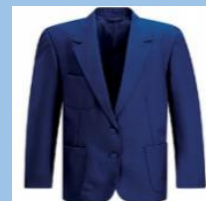
Summer Uniform

A reminder that as we move into the summer term students should wear the summer uniform which is comprised of the following:

- White shirt / blouse with school tie or Plain White polo shirt - no zips or scallops
- Grey skirt/pinafore (grey, black, white socks/grey, black tights) or Short/long grey tailored trousers (black / grey socks) or Blue and white check dress
- School V neck sweatshirt or cardigan (with logo) - available from PSU
- Royal blue blazer with badge compulsory in the Summer Term - available from PSU or Petite Mode
- Shoulder length hair should be tied back - Black, blue hair bobbles / hairbands, gingham scrunchy
- Black shoes
-

PE Kit

- Plain white polo shirt
- School royal blue shorts - available from PSU
- Black jogging bottoms, **not leggings**
- Trainers - black or white



Finally, may I remind you that school closes on **Friday 23rd May at 3:15pm** and reopens on **Monday 9th June at 8.45 am**.

Information

Place2Be



Place2Be, our in-school mental health support service, has a variety of resources to help you support your child's wellbeing. Visit their Parenting Smart website for free practical advice on a range of topics (from friendship issues to anxiety).

<https://www.place2be.org.uk/our-services/parents-and-carers/support-for-families-in-place2be-schools/parenting-smart-online-course/>

From here, you can access **Place2Be's Parenting Smart Online Course**, including course details, testimonials, and the registration form. Registration is always open, with deadlines closing one week before each course starts. Reminders will also be included in the weekly bulletin.

Place2Be is also encouraging families to use **Parenting Smart** <https://parentingsmart.place2be.org.uk/>, their free online hub offering practical, evidence-based advice for parents of children aged 4-11. It covers more than 50 common parenting challenges, such as school attendance, anger outbursts, and neurodivergence. The content is mobile-friendly, easy to read, and includes subtitled videos, with additional accessibility tools on the website.

Padlets

Padlets are for professionals, parents, and young people. They help you find the information you may need in one accessible space. Padlets are like a themed noticeboard online. Each padlet brings a wealth of resources together in one place around a particular theme.

Trafford Padlets for Families

- [Start for Life Padlet](#)
- [5-11 years \(New\)](#)
- [11-25 years \(New\)](#)
- [Children's Mental Health and Emotional Wellbeing Padlet](#)
- [Family Help Padlet](#)
- [Special Educational Needs and Disability \(SEND\) Padlet](#)
- [Barriers to Education & Emotionally Based School Non-Attendance \(EBSNA\) Padlet \(New\)](#)

Mental Health <https://www.st-marys.trafford.sch.uk/pta/childrens-mental-health>

You can find resources and advice on the school website regarding children's Mental Health. Please be assured that we are always available to discuss any concerns or queries you may have regarding your child. Please email the school office if you would like to have a conversation about your child's mental health.



School Information

Address St Mary's CE Primary School, St Mary's Road, Sale, Cheshire, M33 6SA.

Phone 0161 973 5030

Email office@st-marys.trafford.sch.uk

SEND Email sen@st-marys.trafford.sch.uk

Website <https://www.st-marys.trafford.sch.uk/>

Arbor Login <https://login.arbor.sc/>

ParentPay Login <https://www.parentpay.com/>

School Meal Menu <https://www.st-marys.trafford.sch.uk/parents-and-carers/healthy-eating>

Uniform - <http://www.stmarys.uniform4you.co.uk/>

Password Stmarys1

School Nursing Team Trafford Local Care Organisation 0161 912 2340

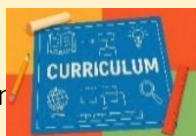


SEND View the latest issue of the SEND [The Link Newsletter](#)

The above link is for parents and carers of children and young people who have Special Educational Needs or Disabilities, as well as those who work with them. If you would like to receive future editions of this newsletter, please sign up using the short [online form](#).

Curriculum Information

Information regarding what your Child will be learning this term can be found here: <https://www.st-marys.trafford.sch.uk/parents/carers/curriculum>. Easy, readable knowledge organisers are also available here.



Governor Information

Information on who the Governors are and the roles that they undertake can be found on the school website here: <https://www.st-marys.trafford.sch.uk/governors/meet-the-governors>



Upcoming dates (subject to change)

School Closes - End of term	Thursday	02 April 2026	3.15pm	All years
School Opens - Summer HT1 - FORGIVENESS	Monday	20 April 2026	08.50am	All years
DEADLINE - Leavers hoodies orders	Monday	20 April 2026	9am	Year 6
St George's Day	Thursday	23 April 2026	All day	All years
Class Photographs	Wednesday	29 April 2026	All day	All years
Victoria Park Mosque - Year 3	Thursday	30 April 2026	09.30 - 11.30	Year 3
Bank Holiday - School Closed	Monday	04 May 2026	All day	All years
Prospective Parent Tour	Wednesday	06 May 2026	09.30 - 10.15	Nursery, Reception
RHS Bridgewater - Year 3	Wednesday	06 May 2026	All day	Year 3
KS2 Sats Monday - Thursday - Breakfast 8am (Do not book appointments or absence)	Monday	11 May 2026	All week	Year 6
Scholastic Bookfair	Friday	15 May 2026	13.45 - 15.15	All years
Walk to School Week	w/c Monday	18 May 2026	All week	All years
Science of Sound Workshop	Tuesday	19 May 2026	All day	Year 4
Robinwood Yr 6 Residential 2026	Wednesday	20 May 2026	08.30 - 15.15	Year 6
PTA - Doughnuts/Cookies after school	Friday	22 May 2026	15.15 - 15.30	All years
School Closes - Half term	Friday	22 May 2026	15.15pm	All years
School Opens - Summer HT2 - PEACE	Monday	08 June 2026	08.50am	All years

Deadlines coming up:

Meals for School trips - a packed lunch will be provided for children who normally have a school meal - please advise the school office if you would prefer to bring your own lunch.

Monday 20th April, 9am -Year 6 Leavers Hoodies- please make payment on the 'School Shop' on Arbor

Thursday 23rd April -Year 3 Victoria Park Mosque trip - please give consent and make payment on Arbor

Wednesday 29th April -Year 3 RHS Bridgewater trip - please give consent and make payment on Arbor

Wednesday 13th May -Year 6 Science of Sound Workshop - please give consent and make payment on Arbor