



St. Benedict's Primary School

16.01.26



We are enjoying our rights and fulfilling our dreams.

Ambition, Resilience, Respect

Next Week

	Events	Clubs
Monday 19th Jan		Music Composition Recorder Year 3 Football
Tuesday 20th Jan	Sampad dance project – Year 4 & 5 2:30pm Parent Consultation Meeting	Year 3 Multisports Year 6 Drama Year 4 and 5 Art Year 6 Golf Year 2/3 Art
Wednesday 21st Jan	Hub Swimming	
Thursday 22nd Jan	Parent Presentation – Rights and RE	Year 3 Cricket
Friday 23rd Jan		

Attendance Week

Attendance Focus Week – Let's Aim for 100%!

Next week is our **Attendance Focus Week**, and we're encouraging all children to be in school **every day**.

Every child who achieves **100% attendance** throughout the week will have their name added to our **Wheel of Names**, which will be spun during assembly.

If your child's name is selected, your family will win a £50 Asda voucher!

Thank you for your continued support in helping us promote excellent attendance.



Family First

We're delighted to offer you access to an online programme packed with practical strategies to support your child's behaviour. You'll receive easy-to-follow videos and quizzes, plus helpful follow-up emails with extra tips and encouragement.

Registration forms are available at the office.



Learning Mentor

This week we said a fond farewell to Miss Winter who has been our Learning Mentor here for 17 years. We thank her for her years of dedication and service to our children.

Welcome Mr Amin to St. Ben's as our new Learning Mentor! Mr. Amin will be supporting pupils with their wellbeing, confidence, and engagement in learning. He is also great at sport and will be using his skills to motivate and inspire children during playtime and lunchtime. You'll also see Mr. Amin on the playground at the beginning and end of the school day. Please do take a moment to say hello and welcome him to the school.



School Opening Times – Parent Consultation

We are considering making changes to the school opening times and would really value your opinions on this to help us make the best decision.

September 2026 Proposal - Opening Times

Mon- Thurs 8:30am – 3:30pm

Friday 8:30am – 1:00pm

What might the benefits be? What might the drawbacks be?

Can you join me on **Tuesday 20th January at 2:30pm** in the main hall?

I'd like to share with you the rationale for this proposal and to find out your opinions on how it.

Parents who attended the meeting this week said that it really helped them to understand the proposal, and they appreciated the chance to talk about it together.

Parents liked the proposal because:

- Children will have less supply or cover teachers (teachers planning time will be on Friday afternoons instead of during the week).
- Parents felt having a consistent teacher is much better for children.
- It is in line with other local schools.
- Children will have a more relaxed weekend and more rest.
- Families will have more time together to go away at the weekend.
- Children will find it easier to go to school on Fridays as it is just for half a day.

Parents said some drawbacks may include:

- Some families find it hard to get to school on time.
- Younger children might find the longer day tiring.



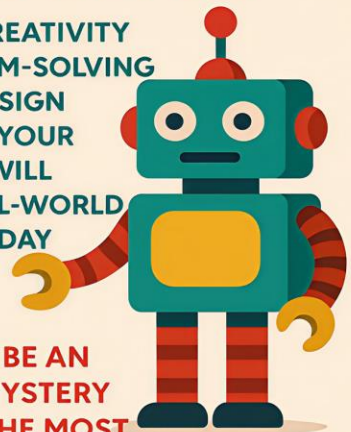
JOIN OUR SCHOOL AFTER-SCHOOL CLUBS

Football, Multisports, and Cricket – Year 3
Art – Years 2, 3, 4, and 5
Singing – Whole School
Composition and Recorder – KS2
Drama – Year 6



SPRING 1 SCIENCE PROJECT

USE YOUR CREATIVITY
AND PROBLEM-SOLVING
SKILLS TO DESIGN
A ROBOT OF YOUR
OWN, THAT WILL
SOLVE A REAL-WORLD
PROBLEM TODAY
OR FOR THE
FUTURE.



THERE WILL BE AN
AMAZING MYSTERY
PRIZE FOR THE MOST
CREATIVE ENTRY!

DEADLINE: FRIDAY 6TH
FEBRUARY 2026