



"Together we learn"

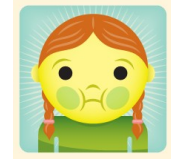
Exclusion Periods & Infection Control Policy

Ratified on:
Chairperson's Signature:

Banbridge Nursery School

Exclusion Periods & Infection Control Policy

Excluding children who have certain infectious diseases helps to prevent other children from becoming infected.



If your child is unwell, please do not send him/her to school.

It is up to you, not your child, to determine whether he/she is well enough to attend school or not. Experience has shown that children, who are unwell but say they want to come to school, are often overwhelmed when they arrive there. This can undermine the valuable work done in the early days and weeks to settle the child into the school routine. A child who is unwell will not learn effectively and will require an undue amount of attention from the staff which is unfair to the other children. If your child is unable to come to school, please try to ring us early in the morning to let us know.

In the event of a child becoming unwell or having an accident in school, you will be contacted immediately. For this reason it is imperative that the school has up-to-date contact details – your home address and at least 3 contact telephone numbers should be provided at or before enrolment in August/September. The school should be informed immediately of any changes to these details.

Please note that we do not administer medicines to children.

The exception to this is the use of an inhaler which may be necessary to control asthma or an Epi-pen in the case of a child having an allergic reaction. *(Please refer to our policy on the administration of medication.)* A normal antibiotic, which has to be taken 4 times daily, can be taken in the morning, at 1.15-1.30pm when your child is collected, at teatime and bedtime. If you wish the medicine to be administered during school time you are welcome to come and give the medicine to your child yourself. However, if your child has a long term or chronic illness which requires frequent medication in order to maintain regular attendance at school, you should discuss this with the Principal.

Good hygiene is promoted at all times in the school.

The children are encouraged to:

- ◆ wash their hands at the appropriate times
- ◆ cover their mouths when coughing / sneezing

- ◆ use paper tissues and dispose of these in the appropriate bins

The Public Health Agency has provided guidance on infection control. These guidelines will be adhered to by Banbridge Nursery School. A link to this guidance has been provided below. A hard copy is also on display in the hall and hard copies are available from the office on request.

Sources used in the preparation of this policy

www.publichealth.hscni.net - *Public Health Agency (March 2017)*
Guidance on infection control in schools and nurseries

Other policies to refer to -

- ◆ Policy for the administration of medication in school
- ◆ Health and Safety Policy