

Learning for life!

Meridian Newsletter

Term 1

**Wednesday 3rd September –
Friday 24th October**

Term 2

**Monday 3rd November –
Friday 19th December**

www.meridianschool.co.uk



Meridian Community Primary
School and Nursery



@MeridianCPS

**Friday
12th**

**September
2025**

HEADTEACHER UPDATE

Dear Parents and Carers

Welcome back! It has been lovely to see all the children back at school – they have all settled in really well, and I have been really impressed with their focus on learning. We have enjoyed seeing our new Reception children join us – they have been brilliant at coming into school independently this week – well done!

School Jotter

Don't forget to download our school app so that you can keep up to date with all our communications and news! More information is available on our website [here](#) or further down in this newsletter.

WhatsApp Groups

I know that lots of you have class or year group WhatsApp Groups, which are a great way to share information about what is going on in school. I would like to remind parents and carers that in the past, some upset has been caused due to negative comments written about the school, other people (including staff), and even children at Meridian. There have also been a few occasions when group chats have incited and resulted in multiple and identical complaints, which can be frustrating and time-consuming for the school to deal with effectively. Please can you remember that whilst you may have put in restrictions and security measures on your WhatsApp group, once something is in writing, it can easily be screenshot and then shared with others and the school. If you have a concern, then please contact the school in the usual way.

Forest School

Mr. Legate has been super busy getting our Forest School area ready for lessons next week. You can see when your child has Forest School on our website [here](#).

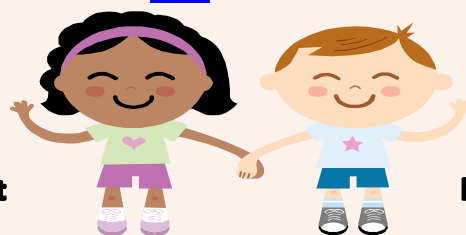
I hope you have a lovely weekend!
Take care and best wishes

C. Westcott

Claire Westcott
Headteacher

strength

respect



kindness

honesty

responsibility

IMPORTANT INFORMATION

TERM DATES

2025/2026

Term 1

Wednesday 3rd September – Friday 24th October

INSET DAY – Wednesday 3rd September

INSET DAY – Thursday 4th September

Children back to school on Friday 5th September

Term 2

INSET DAY – Monday 3rd November

Monday 3rd November – Friday 19th December

Term 3

Monday 5th January – Friday 13th February

INSET DAY – Monday 5th January

Children back to school on Tuesday 6th January

Term 4

Monday 23rd February – Friday 27th March

Term 5

Tuesday 13th April – Friday 22nd May

Term 6

Monday 1st June – Wednesday 22nd July

INSET DAY – Wednesday 22nd July

Please note all INSET days have been set for 2025/2026

KEY DATES

17.09 Year 4 Meet the teacher 3.20pm – 3.40pm

18.09 Year 5 Meet the teacher 3.20pm – 3.40pm

19.09 Year 6 Meet the teacher 3.20pm – 3.40pm

26.09 Flu vaccination in school

14.10 Parents Evening (3.30pm – 6.00pm)

16.10 Parents Evening (4.00pm – 7.00pm)

24.10 End of term 1

03.11 School closed for INSET for staff

06.11 New Reception 2025 Open Day – 9.30am and 1.30pm

15.12 Reception Christmas Performance – 9.15am and 1.30pm

16.12 Years 1 and 2 Christmas Performance – 9.15am, 10.45am and 1.30pm

17.12 Years 3 and 4 Christmas Performance – 9.15am, 10.45am and 1.30pm

18.12 Years 5 and 6 Christmas Performance – 10.00am and 1.45pm

19.12 End of term 2

05.01 School closed for INSET for staff

06.01 Children back to school

KEEPING CHILDREN SAFE

Safeguarding at Meridian

If you have a safeguarding concern about a child that attends Meridian, please do contact one of the Designated Safeguarding Leads:

Designated Safeguarding Lead

Mrs. Lucy Newth

Deputy Designated Safeguarding Leads

Ms. Claire Westcott, Mrs. Helen Mapp,
Mr. Jon Barcock, Miss. Ciara Smiles, Miss. Nadia Pentland, Miss. Laura Miles

**During the school holidays, please contact:
Single Point of Advice (SPOA) on 01323 464222**

If you have an immediate or emergency concern about a child's safety, please call 999.

The NSPCC has advice about this on their website [here](#).



NHS
East Sussex
School Health Service

Aged 11 to 19?
Or parent/carer of a child or young person aged 5 to 19 years old?

Speak to a school nurse in person.
Tuesdays and Thursdays
10am to 3 pm
and 6 to 9pm

Click <https://nhs.uk/east-sussex-school-health>
or text
07507 332473 anytime.

East Sussex School Health

Service provided by Kent Community Health NHS Foundation Trust

Confidential, private and here for you.

MERIDIAN NOTICEBOARD

Forest School Kit

We have changed our arrangements for Forest School kit as some children were struggling with wearing their Forest School kit in school, especially if they got wet and muddy!

Children will now need to bring their Forest School Kit into school each week to change into.

Please do not send your child to school dressed in their Forest School kit.

For children who have Forest School in the morning, they will change when they arrive at school and change back into their school uniform after their Forest School lesson.

For children who have Forest School in the afternoon, they will change into their Forest School kit and go home at the end of the day in this kit, bringing their school uniform home.

P.E. Kit

Thank you to everyone for sending your children in for P.E. this week wearing the correct kit – we really appreciate it.

Just to remind everyone, our current expectations are that children come to school wearing plain dark tracksuit bottoms (navy, grey, or black), a white round-neck t-shirt, their school jumper, and trainers (not plimsolls, please).

They will need their royal blue P.E. shorts in their bags to change into if Mr. Strange decides this is the most appropriate for the lesson.

Please remember that leggings and cycling shorts are not part of our P.E. kit.

If you want to know when your child is having P.E. this term, please visit our school website [here](#).

Water Bottles

WATER ONLY PLEASE

Please remember to send your child into school with a named water bottle.

Children should not bring in squash into school.



Hair in school expectations

Please can I remind parents/carers of our expectations around children's hair in school:

- All long hair needs to be tied back/up
- All hair needs to be the natural colour – no dyed or highlighted hair please
- Extreme haircuts, such as mohicans and shaved patterns/images are not considered appropriate for school.

Year Group Emails

If you would like to make contact with your child's class teacher, you are very welcome to use our Year Group Emails. However, please remember that teachers are teaching all day and then have marking, planning, meetings and other school related work to complete after school. So please do not expect an immediate response. They will aim to respond to you within 3 working days. If your query is an emergency or you are informing the school of a change of pick up arrangements, please contact the school office. Thank you for your support with this.

Nursery – YearN@meridian.e-sussex.sch.uk

Reception – YearR@meridian.e-sussex.sch.uk

Year 1 – Year1@meridian.e-sussex.sch.uk

Year 2 – Year2@meridian.e-sussex.sch.uk

Year 3 – Year3@meridian.e-sussex.sch.uk

Year 4 – Year4@meridian.e-sussex.sch.uk

Year 5 – Year5@meridian.e-sussex.sch.uk

Year 6 – Year6@meridian.e-sussex.sch.uk

Office – office@meridian.e-sussex.sch.uk

MERIDIAN NOTICEBOARD

What to do if you have a worry or concern

At the beginning of a new school year it is always useful to remind everyone about what to do if you have a concern.

In the first instance, please ask to speak with your child's class teacher. You can make a telephone appointment to speak to them after school or e-mail the year group e-mail address. This is the most useful way to communicate your concerns as the class teacher/s know your child the best and so will be able to answer any questions and support you and your child through any issues you may have.

Next, if you are not satisfied you can make an appointment to speak with the Phase Leader (see below for more information about who they are).

After this stage you are welcome to make an appointment to speak with Ms Westcott (Headteacher) or Mrs. Mapp (Deputy Headteacher). You can also meet with Mrs. Newth (Assistant Headteacher), Mr. Barcock (Assistant Headteacher) or Miss. Smiles (Assistant Headteacher).

For more information, please do read our [Complaints Policy and Procedure](#) available on our school website.

Other useful policies are our [Home School Communication Policy](#) and our [Parent Code of Conduct Policy](#).

Our Leadership Team

Headteacher: **Ms Claire Westcott**

Deputy Headteacher: **Mrs. Helen Mapp**

Assistant Headteacher (Inclusion Lead: Safeguarding, Attendance and SENCo): **Mrs. Lucy Newth**

Assistant Headteacher (English and Curriculum): **Miss. Ciara Smiles**

Assistant Headteacher (Maths and Curriculum): **Mr Jon Barcock**

Early Years Phase Leader and Nursery Class Teacher: **Miss. Nadia Pentland**

Years 1 and 2 Phase Leader and Year 1 Teacher: **Mrs. Charlotte Mackay**

Acting Years 3 and 4 Phase Leader and Year 4 Teacher: **Mrs. Emily Beeching**

Years 5 and 6 Phase Leader and Year 6 Teacher: **Mrs. Lauren Martin**

Additional Phase Leader: **Mr. Chris Legate**

Contact details

At the start of each new academic year, we ask that parents update any contact details that may have changed over the summer holidays. These may include new addresses, telephone/mobile telephone numbers as well as contacts that we would call if your child is unwell or needs collecting from School. Please ensure that we have at details of **at least two emergency contacts**. Please pass all changes, in writing, to the School Office.

Thank you

Earrings in school

Please can we remind parents that children should only wear stud earrings to school.

Hoop earrings are not appropriate for school as they may get caught when playing or changing, which could cause an injury. Thank you for your support with this matter.

MERIDIAN NOTICEBOARD

Parent Consultations Meetings

Please make sure you have put the Parents' Evenings and Nursery Parents' Consultation meetings in your diaries so that you can make an appointment to find out about the progress your children have made since September. This is such an important opportunity for you to hear about how your child has settled in and what they are doing really well at. Teachers can also offer advice about how you can help at home! Appointment bookings will be made available later in the term.

School Uniform

Please I remind everyone that **black leggings or black tights with white socks are not part of our school uniform expectations.** If your child is wearing a dress or pinafore, please can they wear black or grey tights, or white or grey socks only.



How to use our School Jotter App

1. Download the app – search your app store for “School Jotter 3” and download
2. Once downloaded, open the app and select GUEST LOGIN (Not Sign up)
3. Click Search. Type in Meridian and select our school
4. You will then be shown a list of your schools (Meridian)
5. Tap the school and our app will load – allow notifications

School Shoes

Don't forget – school shoes need to be plain black shoes or plain black trainers. No colours or logos please!



SEND at Meridian

We have a great SEND (Special Educational Needs and Disabilities) team who work incredibly hard to support the children at Meridian who might need additional support in school, including all our teachers and all our Teaching Assistants. If you have any questions about how your child is being supported in school, please speak to your child's class teacher in the first instance.

You will receive a plan for your child that sets out the support they will receive in school, and you will get the opportunity to speak to your child's class teacher about this during the academic year.

Mrs. Newth is our Inclusion Leader and SENCo (Special Education Needs Co-ordinator) who oversees our SEND provision across the school, including supporting families and children to get the right support they need. She also leads Safeguarding and Attendance.

Ms. Treglown is our Deputy SENCo who supports Mrs. Newth, working with families and children to get the support they need. She is also our Mental Health Lead in school.

If after you have met with your child's teacher you still have concerns, you are welcome to make an appointment with either Mrs. Newth or Ms. Treglown. Please email them at SENCO@meridian.e-sussex.sch.uk Please allow them 5 school days for a reply, as I am sure you will appreciate how busy they are.

PERSONAL DEVELOPMENT AT MERIDIAN

PSHE lessons for this term (Personal, Social and Health Education)

In term 1, all children will be learning about “Being Me in My World” through our Jigsaw PSHE scheme.

Children will learning about how to work together as a class and set class rules and expectations for throughout the year.

This Jigsaw piece also develops children’s understanding of rights and responsibilities and rewards and consequences.

It’s a great theme to start the year and involves welcoming new children into their classes and developing class communities for children who have been mixed this year.



LEARNING AT MERIDIAN

Author Studies

For the first two weeks of the Autumn term, all children (Nursery to Year 6) are learning about their Year Group author. We have chosen a variety of authors for the children to find out about and read their books/poems.

Nursery:
Julia Donaldson



Reception:
Rachel Bright



Year 1
Nadia Shireen



Year 2
Anthony Browne



Year 3:
Valerie Bloom



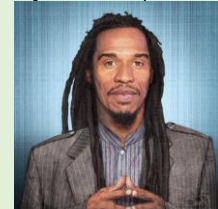
Year 4
Raymond Briggs



Year 5
Shaun Tan



Year 6
Benjamin Zephaniah



There will be displays around school in the next couple of weeks to celebrate the children’s learning and work about these amazing authors! I will take photographs to share with you all once they are ready!

PLAY AT MERIDIAN

OPAL playtimes

You will have seen letters that have been sent out this week about our OPAL playtimes. Mr. Legate and I led an assembly this week to remind children of our expectations for playing together and the rules/boundaries for playtimes.



The children are really excited about welcoming our new Reception children outside as they learn to play alongside all the other children. Our Reception children will be wearing high-vis jackets initially to help us spot them and support them as they adjust to playing together in a large outside space.

As the weather seems to have suddenly become very wet and windy, please can you make sure your child has a coat and wellies in school at all times. The children go outside in all weathers (unless the rain is exceptionally heavy) – so they need to be appropriately dressed. We will send out reminders over the next few weeks to ensure all children have a suitable coat and wellies. THANK YOU!



ATTENDANCE AT MERIDIAN

Good attendance at school is so important so that children do not miss out on their learning. Did you know that when teachers plan their lessons, each lesson builds on the previous one? So if a child misses 1 or 2 lessons a week, they will find the work much harder as they will be developing gaps in their knowledge.

If you are worried about your child's attendance or would like some support with this, please do make an appointment with Mrs. Newth or our EWO (Education Welfare Officer), Victoria Sutherland.

Don't forget to send a signed letter to school confirming the reason for your child's absence on the day they return to school!

Whole School Attendance
94.0% (our target is 96%)

Best Attendance this term
Week 1: 2T, 4SPS and 5S 99% 😊

