



Harling Herald

'Endeavour, Enjoy and Achieve Together' 31.03.25

Cost of school dinner monies

We have received notification from Norse that the cost of a school meal will **increase to £2.70** which has been agreed with Norfolk County Council . We will be applying this increase from the start of the summer term (rather than the first of April due to the implementation of our new management information system).

This will not affect families that are entitled to free school meals or those in Reception to year two who receive the Universal Free School meals offer for infants.

Thank you (and well done!) to everyone who has logged into our new Compass Parent Portal to pay for school meals. Going forward all school meals will need to be paid for in advance, which means that families need to have credit in the 'wallet' section of the app. Parents can move credit (in multiples of £10) into their wallet, which then can be used to pay for meals. If you do not have credit in your account, children will need to bring a packed lunch to school. If parents have credit in their Pupil Asset account we have used this to pay for meals this week, whilst everyone is moving over to the new system.

Musical Monday

This week we had a musical Monday assembly led by Mr and Mrs O'Gorman, with performances from the choir, recorder club and Kepler in year five who sang solo as well as performed on the saxophone. After school the Choir visited The Beeches care home to sing to the residents. The children performed a medley of Disney songs, along with Sweet Caroline and Thank you for the music by Abba. The children all sang beautifully and the residents' smiles showed how much they had enjoyed the children's performances. Thank you to Mr and Mrs O'Gorman for organising these opportunities for our children to perform and show case their talents.

Mr and Mrs O'Gorman have spaces for the children to learn to play the recorder, flute, clarinet, saxophone and piano next term, as well as individual singing lessons. The school owns a number of instruments (flute, saxophones and clarinets) that children can loan for free if they are taking weekly lessons. For further information please see the email sent out earlier this week. Choir will also continue to run next term and the children will be rehearsing for a number of summer events.

The Primary Times

The latest edition of the Primary Times is out with details of Easter holiday activities going on in Norfolk.

<https://www.primarytimes.co.uk/norfolk/>



School Council Bake Off

The School Council would like to say a huge thank everyone who participated in their Bake Off competition on Monday. They raised £60.60 for The Big C Cancer Appeal. Congratulations to everyone who won a Bake Off award—there were some truly delicious entries and it was a tough job deciding who the winners would be! They would also like to say thank you to Mrs Butters (our cook), Mr Allan-Brooks (one of our governors), Miss Yates and Miss BB for helping them with the judging.

Sheep friends

We all loved having our four legged friends visiting last week—the ewe and her two lambs brought so much joy to school, we also learn lots about sheep, how to care for them and why they are farmed in the UK. Thank you to Mrs Good for all of her diligence and care as our chief shepherdess, alongside Eden, checking in on our sheep morning and night and manging the project.

Extension of Food Voucher Scheme

Norfolk County Council have announced an extension to the food voucher scheme for families entitled to free school meals until March 2026. Eligible families will continue to receive £15 per child each month (and £30 in April, August and December due to school holidays).

Free School Meals are available to the children of parents that are in receipt of a number oof benefits including:

- Universal Credit (provided the family has an annual net earned income of no more than £7,400 (after tax), as assessed by earnings from up to 3 of the most recent assessment periods);
- Income Support;
- Income-based Jobseeker's Allowance;
- Child Tax Credit (providing the family is not entitled to Working Tax Credit and have an annual gross income of no more than £16,190);

Please make sure that you register if you are eligible, as this also provides families with access to additional support such as food vouchers, free holiday activities and free individual music lessons. To check whether you are eligible click on the following link - <https://fiso.norfolk.gov.uk/synergy/Enquiries/Citizen/FreeSchoolMeals.aspx/> or contact the school office who can help you.



Our Parent Support Advisor

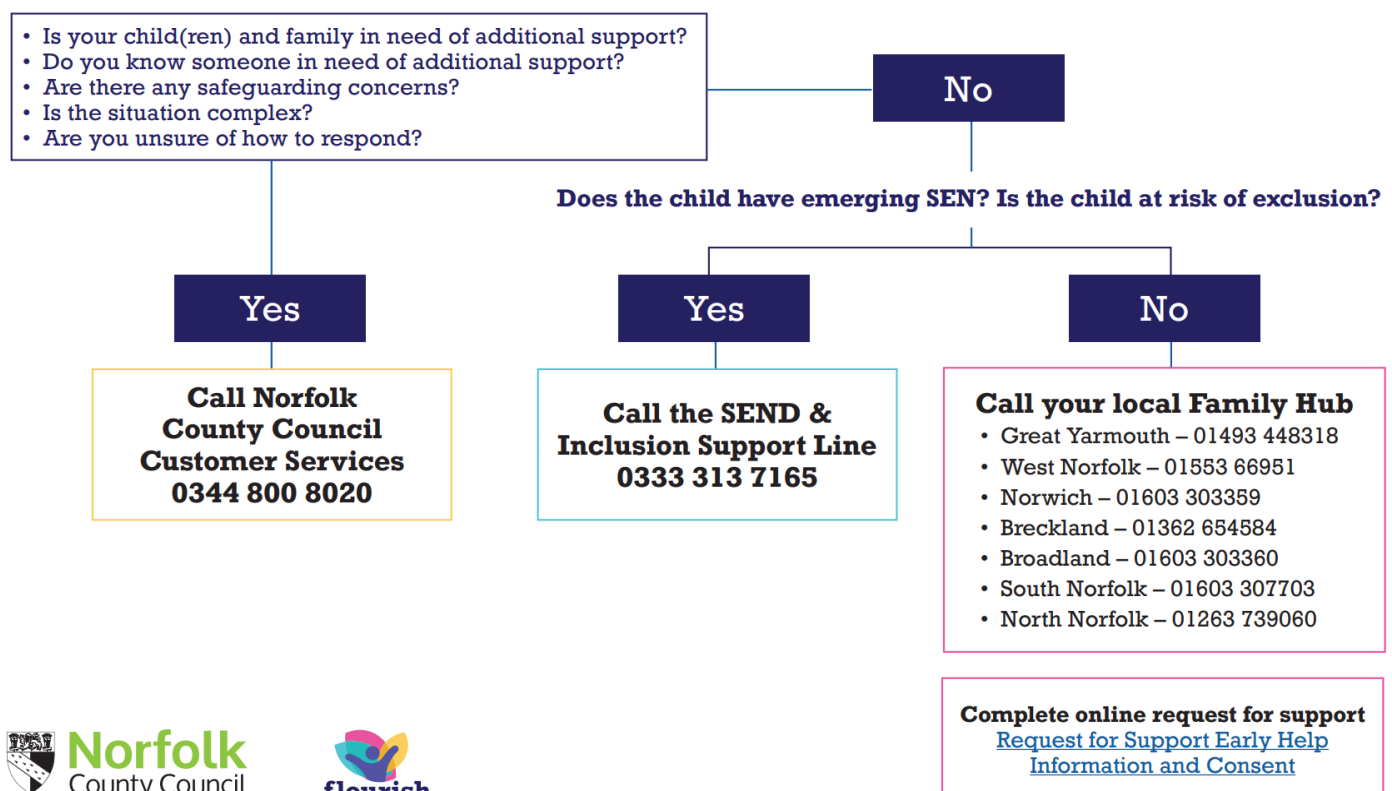
Tracey Mitchell is our Parent Support Advisor, who works in our school on a Thursday. Tracey works across Bunwell, Banham and Thompson primary schools as well East Harling over the week. Tracey is available to provide a listening ear, as well as sound, down to earth advice on any parenting issues. She is also able to provide practical help with things like accessing additional financial support or applying to services that can offer specific support or advice. She is an absolute mine of useful information—and if she doesn't know the answer she'll find out who can help you! Tracey can be contacted via her mobile on 07745523537 (during school hours, on any day of the week) or email psa@cee.coop.

Safeguarding children

As a school we have a statutory duty to safeguard the well-being of all of our children. The school's designated safeguarding lead professional is the Headteacher, Miss Yates (or Miss Blackburn, the Deputy Headteacher, in her absence). Parents are strongly encouraged to share/report any child protection or safeguarding concerns with the designated teacher at any time. Alternatively, anyone can contact the NSPCC helpline on 0808 8005000 or Norfolk Children's Services on 0344 800 8020, this can be done anonymously.

Norfolk Children's Services have asked schools to share this flowchart with families so that they know who to contact if they are seeking support for their families or someone they know. The SEND and Inclusion Support Line can provide guidance for professionals and families looking for support and advice for children with emerging SEN and can help with referrals to Schools & Communities, SEND and Inclusion Advisors and other teams. Our Local Family Hub can offer advice and support for any child or family seeking early help or support with access to a range of services including Start for Life Services, parenting support, debt and welfare advice, and housing advice.

Flowchart for families



Dates for your diary

Tues 1st April	Cherry Class to Thorpe Woodlands
Thurs 3rd April	Last swimming lesson for year three
Thurs 3rd April	SEND parent coffee afternoon with Miss BB and Mrs Mitchell
Fri 4th April	Year two to visit the Exploring Science Centre
Fri 4th April	PTFA Clothing Collection
Fri 4th April	Last day of term
Mon 7th—Tues 22nd April	Easter holidays
Wed 23rd April	First day back for pupils
Tues 29th April	First swimming lesson for year four pupils (year four will swim on a Tues until the 15th July)
Fri 2nd May	PTFA Treaty Friday (year one families to donate cakes please)
Mon 5th May	Bank Holiday Monday—school closed
Tues 6th May	Open school, 3.20pm—3.40pm
Mon 12th—Thurs 15th May	Year six SATs week
Tues 13th May	Cherry Class to Thorpe Woodlands
Tues 13th and Thurs 15th May	Parents' evening appointments with teachers
Wed 21st May	Sports Carousel
Thurs 22nd May	Full Governing Body meeting
Mon 26th—Fri 30th May	Half term week
Tues 3rd June	Open school, 3.20pm—4.20pm
Wed 4th June	Treasure Island performance for pupils, visiting theatre company
Fri 6th June	Treaty Friday (Cherry Class to donate cakes please)
Tues 10th June	Cherry Class to Thorpe Woodlands
Mon 23rd—Wed 25th June	Year six trip to Kingswood
Fri 27th June	Infant and Junior Sports Day
Thurs 3rd and Fri 4th July	Year six transition days at Old Buckenham High School
Fri 4th July	Year six transition day at Diss High School
Fri 4th July	Moving up day (children move up to their new class for the day)
	Ice Cream Treaty Friday
Mon 21st July	Busking day followed by family picnic
Tues 22nd July	Year 6 Leaver's assembly, 10am. Last day of term.
	Last day of term—break up for the summer holidays

Red—dates added to calendar

