

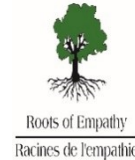
# IRVINESTOWN PRIMARY SCHOOL

Principal  
J E Read - B.Ed.,  
Adv. Dip., PQH (NI)

Tele: 028 6862 1408  
Fax: 028 6862 8946



24 Burfits Hill  
Irvinestown  
Co Fermanagh  
BT94 1DY



Email - [info@irvinestownps.enniskillen.ni.sch.uk](mailto:info@irvinestownps.enniskillen.ni.sch.uk)

Website - [www.irvinestownps.co.uk](http://www.irvinestownps.co.uk)

**JANUARY 2023**

Dear Parent,

A very happy and healthy new year to all of you and your families.

At the beginning of the year, we all start with good intentions. The eco team has decided that healthy eating should be a target for this year. As part of that we intend to focus on Lunch boxes.

What should I put in my child's packed lunch?

**Make sure your packed lunch contains:**

1. A portion of bread (or similar), rice, potatoes or pasta -e.g. tuna sandwich
2. Fruit and /or vegetables e.g. carrot sticks / mandarin orange
3. A portion of dairy or a calcium rich alternative- e.g. yoghurt or cheese
4. A healthy drink- water or milk.

I have included a few healthy eating lunchbox links with advice for parents on packing a healthy lunch box.

<https://www.nhs.uk/healthier-families/recipes/healthier-lunchboxes/>

<https://www.bbcgoodfood.com/recipes/collection/school-lunch-recipes>

<https://lifemadesweeter.com/easy-school-lunches/>

It is extremely important that lunch boxes are balanced and not full of sugary treats.

Breaks should also be healthy. Pupils are awarded house points for healthy breaks. The school kitchen offers fruit every day and toast is available on Tuesday, Wednesdays and Thursdays. Fruit only on Mondays and Fridays.

Please also remember that water or milk are the only drinks permitted in school. Children are **NOT ALLOWED** diluting juice. (Please remember they do tell that they have juice not water – and it causes great annoyance amongst other pupils.

## **SUSTRANS - WALK UP THE HILL WEDNESDAYS**

Thank you for your support on our walk up the hill Wednesdays. We will continue this for the rest of the school year. These small efforts are to help encourage our pupils to adopt a healthy lifestyle and increase their level of exercise. If you want to increase your family's level of activity, Anne Marie from Sustrans has sent an advice sheet for parents on making journeys more active. It has been included at the end of this newsletter.

## **MONEY RAISED LAST MONTH**

Christmas Jumper Day - N.I. Air Ambulance £133

The Royal British Legion - Poppy Appeal £360.91

Cash for clobber £186

Commission from Trevor Lucy £465

Chernobyl charity shop donation- £200

Choir collection at Supervalu £57.55

## **OPEN DAY**

Our Open Day for parents of prospective pupils was held on Tuesday 10<sup>th</sup> January 2023 between 3.30pm and 4.30pm. This was an opportunity for prospective pupils and parents to come along and see our school. The portal opened for applications on the same day. As well as a face-to-face event this year, we also produced a virtual Open Day so if you see this on Facebook, please tag friends who might consider our school and share. If you know of any prospective parents who missed our Open Day please let tell them to contact school to arrange a viewing if they so wish

## **DIGITAL ADMISSION APPLICATIONS FOR CHILDREN STARTING P1 IN SEPTEMBER 2023**

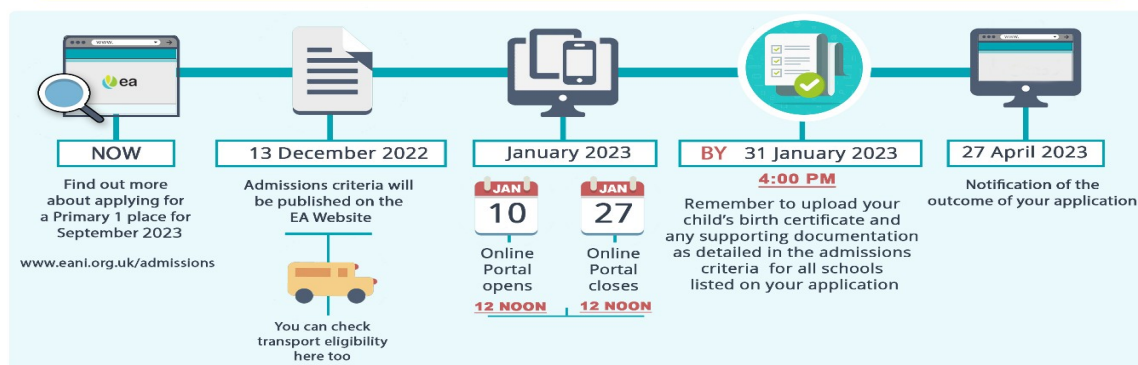
The Education Authority (EA) uses an online application process for admissions for primary school. A portal for places for the September 2023 intake in which parents can apply online for a place is currently being updated. The Go Live date for the new digital admissions is **Tuesday 10<sup>th</sup> January 2023 at 12 Noon**. The closing time and date for applications will be **12 Noon on 27<sup>th</sup> January 2023**. Applications after 27<sup>th</sup> January will be considered as late.



### **KEY DATES FOR PARENTS – APPLYING FOR PRIMARY ONE ADMISSION – SEPTEMBER 2023**

Children born on or between 2 July 2018 and 1 July 2019 are compulsory school age in September 2023

Children born on or between 2 July 2019 and 1 July 2020 can apply for a place in a reception class



## **SCHOOL SWIMMING PROGRAMME**

Our swimming programme commenced on Wednesday 11<sup>th</sup> January 2023 with Year 5. Swimming costs remain at £3 per session as the PTA will cover transport costs.

All pupils in P5-7 have already received a letter regarding swimming.

**Dinner money £2.60 a day or £13.00 per week - Paid at beginning of week.**

**Milk money for the Spring Term will cost £13.00.**

## **SHARED EDUCATION**

P5-7 teachers are planning lessons which are due to start in the next couple of weeks. P5 shared education lessons are with St Paul's pupils only, however P5 and P7 will link with both St Paul's and Ballinamallard Primary School. You will be kept informed through your class teacher. The teachers are planning six lessons and a trip. A celebration event will also be planned for the Summer term.

#### **P4-7 AFTER SCHOOL CLUBS**

The letter about clubs has already been distributed. Please ensure you return the booking slip asap.

#### **WORLD BOOK DAY**

WBD is on Thursday 2<sup>nd</sup> March. This is an annual event. All pupils in school are asked to dress up as a character from a book. Please use, reuse, recycle and be creative. There is no need to buy expensive outfits. Just think about what you have at home and work around that.

**INTERNET SAFETY WEEK**- Keeping safe online is a huge issue nowadays. E-safety is ongoing in school, but on the week beginning 6<sup>th</sup> February we are hosting an internet safety week. All classes will be learning how to stay safe online, The PSNI are coming in to talk to Key Stage 2 and also talk to parents about how to keep their child safe on-line. This has been planned for 2pm on Monday 6<sup>th</sup> February and I encourage you to attend.

#### **ATTENDANCE**

Irvinestown Primary School believes regular attendance at school is crucial to allow every child to fulfil their potential. We are committed to providing an education of the highest quality for all our pupils. We believe high attainment depends on good attendance. Attendance is recorded twice daily on sims.net. A full attendance requires a child being present for the entire day. If a child is sent home due to illness, they will be marked absent for the afternoon session. If they go to an appointment this will also be marked as an absence.

#### **ROLE OF PARENTS/GUARDIANS**

- To ensure their child goes to school when they are well
- Ensure their child arrives at school on time
- Arrange medical/dental appointments outside of school hours when possible
- Inform school if their child is absent from school by telephoning on the first day of absence
- **Send an absence note to school with the child when they return explaining the reason for the absence**
- Take family holidays outside term time. **Holidays taken during the school term are unauthorised absences, even when the school has been notified of the holiday (It is school policy not to send missed work home before the holiday)**
- Attend parent evenings and school events
- Discuss any problems or difficulties with school – staff want to help and support



## WHY ATTENDANCE AT SCHOOL IS SO IMPORTANT –

If a child of compulsory school age is registered at a school it is essential that they attend their school regularly and maintain a pattern of good attendance throughout their school career.

Excellent attendance at school is important to allow a child or young person to fulfil their potential.

Below are just some of the key reasons why it is so important children attend school:

- ☑ To learn.
- ☑ To have fun.
- ☑ To make new friends.
- ☑ To experience new things in life.
- ☑ To develop awareness of other cultures, religion, ethnicity and gender differences.
- ☑ To achieve.
- ☑ To gain qualifications.
- ☑ To develop new skills.
- ☑ To build confidence and self-esteem.
- ☑ To have the best possible start in life.



**Miss School -  
Miss Out!!**



### **Key Point**

Young people who regularly miss school without good reason are more likely to become isolated from their friends, to underachieve in examinations and/or become involved in anti-social behaviour.



## WHAT THE LAW SAYS –

Under Article 45 of the Education and Libraries (Northern Ireland) Order 1986 (“the 1986 Order”), it is the duty of parents who have a child of compulsory school age<sup>1</sup> to ensure their child receives efficient, full time education suitable to their age, aptitude, ability and to any special educational needs they may have. Such education may be provided by regular attendance at school or otherwise, for example home education.

Paragraph 3 (1) of Schedule 13 to the 1986 Order states that it is the duty of a parent of a registered pupil of a school to secure their regular attendance at school. This applies to all children of compulsory school age who are on the roll of a school. As a parent you are legally responsible for making this happen.

Under Part III of Schedule 13 to the 1986 Order, if a child or young person who is registered at a school does not attend regularly, a parent can receive a fine not exceeding £1,000 in court (for each child). An Education Supervision Order (ESO) could also be made by a court under Article 55 of the Children (NI) Order 1995.

### Key Point

Education is not an option – it’s compulsory.

## FAMILY HOLIDAYS –



You can demonstrate your commitment to your child’s education by not taking holidays during term time. Any child or young person who is absent from school due to a holiday will miss out on important learning and will fall behind with their school work.

In each Academic Year there are only a maximum of 190 statutory school days – this allows plenty of time for holidays to be arranged outside term time.

Holidays taken during term time will be categorised as an unauthorised absence.

### Key Point

Avoid taking family holidays during the school term.



## EVERY SCHOOL DAY COUNTS –

Every single day a child is absent from school equates to a day of lost learning.

Attendance percentages can be misleading.

100% Attendance	0 Days Missed	Excellent
95% Attendance	9 Days of Absence 1 Week and 4 Days of Learning Missed	Satisfactory
90% Attendance	19 Days of Absence 3 Weeks and 4 Days of Learning Missed	Poor
85% Attendance	28 Days of Absence 5 Weeks and 3 Days of Learning Missed	Very Poor
80% Attendance	38 Days of Absence 7 Weeks and 3 Days of Learning Missed	Unacceptable
75% Attendance	46 Days of Absence 9 Weeks and 1 Day of Learning Missed	Unacceptable

For some parents, 90% may seem like an acceptable level of attendance, but the reality is that 90% attendance means that your child will miss half a school day each week or 19 days of school during the school year – that's nearly 4 school weeks.



Give your child the best start in life – every school day counts.



Some pupils are still wearing Summer T-shirts. Please note school shirts and ties should be worn. If you do not have a school shirt, we have a small number of second-hand shirts in school that are in good condition. Please let your class teacher know if you need one sent home. On the same note, if you have good quality uniform that your children have grown out of, we would appreciate these in school. Underwear for the Foundation stage is also very useful, so if your family has outgrown some please consider donating to school.

The uniform consists of:

**Boys:** - Light blue shirt  
School tie (navy blue with light blue stripes)  
Navy blue v-neck sweatshirt with logo  
Grey trousers  
Grey socks  
Black shoes.

**Girls:** - Light blue blouse  
School tie (navy blue with light blue stripes)  
Dark grey skirt/pinafore/trousers  
Navy blue v-neck sweatshirt with logo  
Knee length grey/navy socks/tights  
Black shoes  
Hair accessories should be blue.  
(Girls with long hair should wear it tied back).  
Only stud earrings should be worn.  
Optional: Irvinestown Primary School coats and fleeces are available in School Days and SD Kells.

**Please note, black shoes are required for school. Trainers are not school uniform.**



## **P7 PUPILS - APPLICATION FOR POST-PRIMARY - SEPTEMBER 2023.**

**The application process for Post-Primary is on-line. The portal opens at 12 noon on Wednesday 1<sup>st</sup> February 2023 and closes at 4pm on Thursday 23<sup>rd</sup> February 2023.**

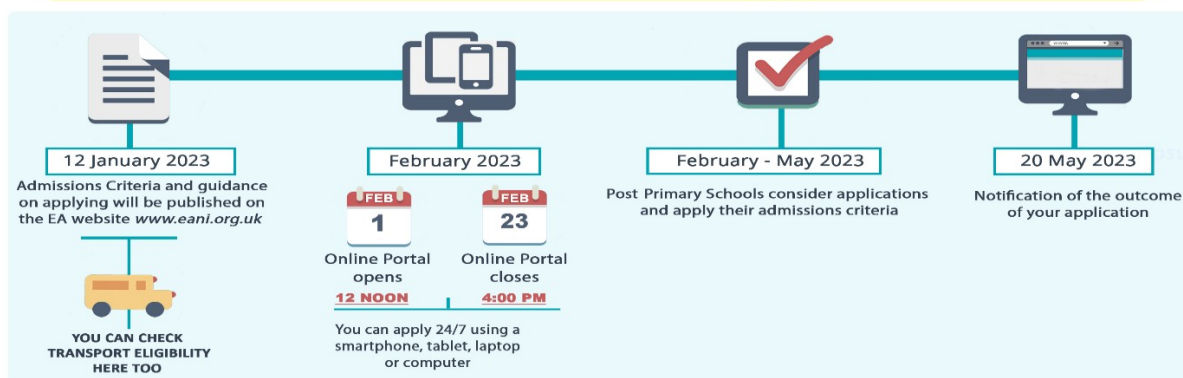
AQE and GL RESULTS are due on Saturday 4<sup>th</sup> February. We wish all our P7 pupils' success with their results. ERGS, Omagh Academy, St. Michael's College and Mount Lourdes require these results. The other schools do not.

<b>OPEN EVENINGS</b>	
Devenish College	Monday 6 <sup>th</sup> February 2023 @7pm
Enniskillen Royal Grammar School	Tuesday 7 <sup>th</sup> February 2023 @7pm
Castlederg High School	Wednesday 11 <sup>th</sup> January 2023 @7.15pm
Erne Integrated College	Wednesday 1 <sup>st</sup> February 2023 @7pm
St Mary's College	Thursday 19 <sup>th</sup> January 2023 @7.30pm
Omagh Academy	Thursday 2 <sup>nd</sup> February 2023 @ 6.30pm
Mount Lourdes Grammar School	Wednesday 25 <sup>th</sup> January 2023 @7pm
St Michael's College	Thursday 26 <sup>th</sup> January 2023 @7pm



## KEY DATES FOR PARENTS : APPLYING FOR A POST PRIMARY SCHOOL PLACE FOR SEPTEMBER 2023

THE USUAL AGE GROUP OF PUPILS WHO TRANSFER TO POST PRIMARY SCHOOL WILL BE 11 YEARS OLD BY 1 JULY 2023  
I.E. PUPILS WITH DATES OF BIRTH FROM 2 JULY 2011 TO 1 JULY 2012, INCLUSIVE.



If you require any further information about any aspect of school life, please do not hesitate to contact us at school.

Thank you for your support as always.

Yours sincerely,

JE Read (Mrs)  
Principal

## DATES FOR YOUR DIARY

FOR AFTER SCHOOL CLUB - see club letter

SDD STAFF DEVELOPMENT DAY - STAFF ONLY AT SCHOOL

UPDATES WILL FOLLOW EACH MONTH

**JANUARY**



				6 Term begins Action Mental Health P7
9 Football P1-4	10 Verbal Arts for Y7 Open Afternoon CHS to see P7	11 NI Water Talk for Y6 P5 Swimming	12 Armagh Planetarium Trip for Y5 Mental Health SU P6 Musical Pathways P1- P4	13
16 Football P1-4 Erne Integrated College visit to P7	17 Verbal Arts for Y7	18 Y5 Swimming	19 Musical Pathways P1- P4 Mental Health SU P6	20
23 Football P1-4 Wee Critters workshop P3 Forest school visit P6 Shared Ed P5	24 Verbal Arts for Y7 Shared Ed P6	25 Y5 Swimming Devenish College for P7	26 Musical Pathways P1- P4 Mental Health SU P6 P7 Shared Ed	27 CHS Big School Day
30 Football P1-4 Action Mental Health P3 Shared Ed P5	31 Verbal Arts for Y7 Shared Ed P6			

<b>FEBRUARY</b>				
		1 Y5 Swimming Action Mental Health P3	2 Musical Pathways P1- P4 Mental Health SU P6 Shared Ed P7	3 Action Mental Health P3 Large schools indoor 5 aside Football Devenish Day P7AQE/GL results on 4 <sup>th</sup>
6 PSNI - P5-P7 internet safety talk Parents 2.00- 3.00 Shared Ed P5 Forest school visit P6	7 Verbal Arts for Y7 Shared Ed P6	8 Y5 Swimming	9 Mental Health SU P6 Shared Ed P7	10
6-10 February Internet safety week				
13 Shared Ed P5	14 Verbal Arts for Y7 Shared Ed P6	15 Y6 Swimming	16 School closed	17 School closed
20 Staff	21 Verbal Arts for	22 Y6 Swimming	23 Shared Ed P7	24 Book Fair

development Day - school closed for pupils	Y7	Y5 Shared Education Trip to Marble Arch Caves		arrives
27 Shared Ed P5	28 Shared Ed P6 Verbal Arts P7			

<b>MARCH</b>				
		1 Y6 Swimming	2 World book day Shared Ed P7	3
6 Shared Ed P5	7 Verbal Arts for Y7 Shared Ed P6	8 Y6 Swimming P7 residential to Gortatole	9 P7 residential to Gortatole	10 P7 residential to Gortatole
13 Action Mental Health P3 & P4	14 Verbal Arts for Y7	15 Y6 Swimming	16	17 School Closed
20 Action Mental Health P3 & P4	21 Verbal Arts for Y7	22 Y7 Swimming	23	24
27	28 Verbal Arts for Y7	29 Y7 Swimming	30	31

<b>APRIL</b>		
3	4 End of term - early closing	