

16th January 2026

GRIMES DYKE NEWSLETTER



GRIMES DYKE
PRIMARY SCHOOL

ASPIRE ENJOY ACHIEVE



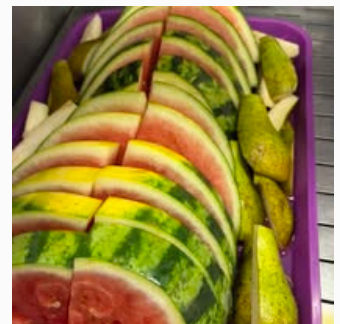
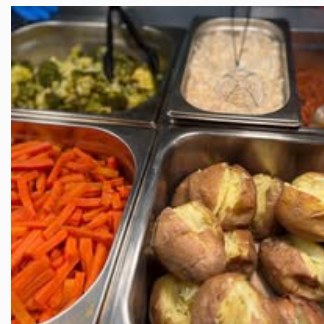
Phases of the Moon



The children in science and nature club have been learning about space recently and this week we looked at the phases of the moon. We used some simple equipment to demonstrate how we see the moon in different shapes over the course of a month. The children then made their own moon phase models.



School Lunches



Has your child tried a school lunch lately? We have a great range of tasty food all cooked on site, which is all Team GD approved! Terri in our kitchen really tries hard to get to know the children and what they like and don't like so nobody ever goes hungry. Don't forget children can choose to have a school lunch on the days they like something on the menu and bring a packed lunch on other days if needed, we are really flexible and children are always guaranteed they get their choice of food. Why not give school lunches a try, especially if your child is entitled to free meals.

Richard Burgon visited Team GD



This morning Richard Burgon - MP for Leeds East visited Grimes Dyke after a kind invitation from Y4 Willow Class. They handed over a pile of letters they had written which contained some concerns they have about issues in our local community. Richard spoke to every child about their letter and has promised to take them back to parliament to read. Once he has read them he will write back to the children. We welcomed the opportunity to show the children democracy in action and of course chatted to him about getting the government to fund schools properly!

Teachers 2 Parents App



Have you downloaded the Teachers 2 Parents text service app for school text messages? If so, please could you delete it! We are having lots of communication difficulties with the app, as it doesn't give parents a notification pop up so messages are being missed. If you don't have the app then messages will just come through as a text message. As always please let us know if you change your mobile phone number.

Be on time for school every day!

We are once again looking at our attendance and punctuality figures and are sadly finding the same children on the list for lateness. We have a list of children who have been late more than once in the same week and are monitoring these closely. School starts at 8.45am so children should be in the playground at this time. We **do not** start at 9am which is a common misconception. Please try and get your child to school on time every day otherwise they are missing out on important learning. We will be in touch with families if children continue to be late and you can expect to be invited into school to see how we can support you to improve.