



Ightenhill Nursery School Newsletter

6th February 2026

Messages

Parent Governor

We currently have two Parent governor vacancies. Attached to this newsletter is some information about the role of a parent governor. If you would like more information please contact Mrs Daniels-Green.

Clothing

Clothing Please ensure that your child brings appropriate clothing for the weather, especially for Forest School. As it is getting colder, children will need: a waterproof coat, hat, scarf and gloves.

Reminder – we ask that children wear shoes that they can put on and take off independently. E.g. no laces etc.

Please leave a bag of spare clothes at nursery and don't forget to bring wellies back to Nursery.

If your child wears nappies, please ensure they have a bag of nappies and wipes in nursery.

Online Safety

Tuesday 10th February is Safer Internet Day. To support this we will be running two drop-in sessions for parents / carers where members of staff will be available to discuss any issues and give tips about online safety and using screens with young children. These sessions will take place on Tuesday 10th February at 9am and 2:45pm. If you would like to attend please let the office know.

<https://saferinternet.org.uk/guide-and-resource/parents-and-carers>

Communication

If you have any queries or concerns, please do not hesitate to speak to a member of staff. There is always a member of staff available at the start and end of sessions and you can also request to speak to your child's Key Person.

Nut Free Nursery



We have a child in Nursery with a nut allergy.

The following items should not be brought into nursery:

- Packs of nuts
- Peanut butter or Nutella sandwiches
- Fruit and cereal bars that contain nuts
- Chocolate bars or sweets that contain nuts
- Sesame seed rolls (children allergic to nuts may also have a severe reaction to sesame)
- Cakes made with nuts
- Any home cooked meals for packed lunches that are made from nuts

This list is not exhaustive, so please check the packaging of products closely. If you have any questions, please do not hesitate to speak to a member of staff.

Please ensure that your child does not bring food containing nuts, thank you.

Reminder

Mobile phones should not be used within the Nursery grounds.



Half term Closure

Nursery will be closed the week beginning Monday 16th February. We will re-open on Monday 23rd February.

Library in the Rainbow Room

Please can children return their library books on either a Thursday or a Friday with their reading journal and in the plastic wallets that were sent home, thank you.



SNACK MONEY

We kindly ask for a contribution towards snacks. £2 per week for 15 hour places and £3 per week for 30 hour places.

This also contributes to dressing up items, ingredients for baking, gifts at Easter and Christmas and special visitors such as the owls and mini beasts etc.

If you would like to pay for this half term, the amounts are:

Am or Pm session only places: £12

30 hours places: £18

If you would like to pay via bank transfer the details are below:



Ighitehill Nursery School

Sort Code: 40-15-17

Account Number: 41031333



RAINBOW ROOM'S SKILLS TO PRACTISE AT HOME:



**Drinking from an open
cup**



RAINBOW ROOM



This week in the Rainbow Room we have been reading 'Crow in the Snow'. We have been learning all about Winter as a season, and how we can dress appropriately for the cold weather. We have been practicing putting on our coats independently, including zipping them up ourselves. We have been making crows out of lolly sticks, identifying features of the bird such as eyes, wings and beak. We have made bird feeders, using our fine motor skills to thread. In maths group, we have explored 'full' and 'empty' to describe the amount in different containers. We also had a very exciting visit from Little Zoo to You!



[Poetry Basket - Popcorn](#)



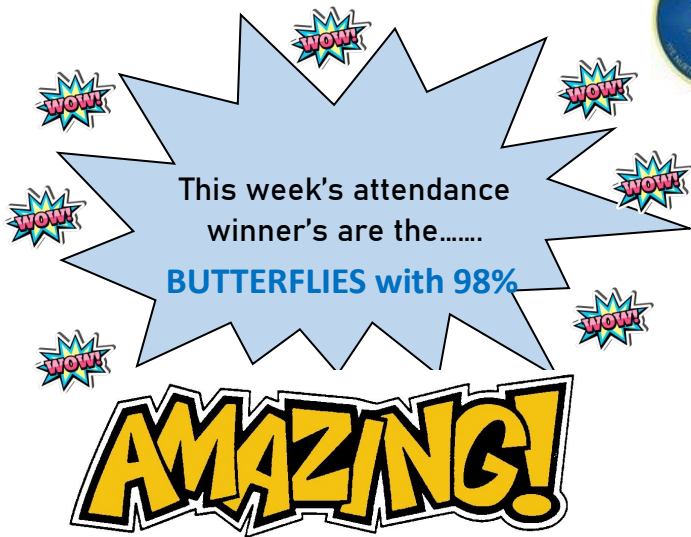
SUNFLOWER ROOM



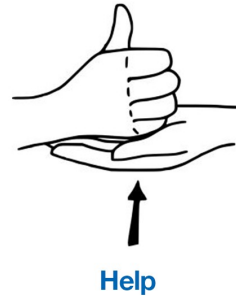
This week in the Sunflower room we have been continuing our topic about wild animals. The children have drawn some lovely, detailed pictures of their favourite animals. We also really enjoyed our visit from 'Little Zoo to You,' please see Tapesstry for photos. We have continued to practise 'Walking through the Jungle' in our focus story groups and will be performing this for each other next week. We have continued following the children's interest in birds and have been finding out about different birdsong, building nests for birds and making robins out of playdough. We have now set up a birdwatching den in our outdoor area and another area inside which the children have been using to spot the different types of birds using our bird-feeding station. The children have also shown a lot of interest in large floor puzzles and are doing really well with putting these larger jigsaws together.



[Walking Through the Jungle | Barefoot Books Singalong](#)



THE MAKATON SIGN OF THE WEEK IS:



Facebook Page



Please like and follow our nursery Facebook page where you will see our regular updates and posts.

<https://www.facebook.com/share/17T8zPqxEO/?mibextid=wwXlfr>

Mission Statement

The focus of the school community at Ightenhill Nursery is to nurture each child in a happy and secure environment, encouraging them to develop and learn and to meet their full potential whilst having fun.
We nurture, we learn, we grow!

Key Contacts

Headteacher Mrs Daniels-Green

Number for the school office- 01282 427154





PARENT GOVERNOR VACANCY

There are places for two parent governors on the governing body of this school. They are elected by the parents of pupils at this school to serve a two year term of office. There is now a vacancy for two parent governor.

Being a governor is a valuable role that offers not only the chance to make a positive difference to the lives of our children but also a good personal development opportunity. Training and development opportunities are provided to all governors.

Below is some information about the role of a parent governor. If you are interested in being a parent governor, please request a pack from the school office. If you are interested in being a parent governor and would like more information, please speak to Mrs. Daniels-Green.

PARENT GOVERNORS

All school governing bodies have parent governors.

WHO ARE PARENT GOVERNORS?

Parent governors are elected by parents of children at the school. For a person to stand for election and to vote in a parent governor election he/she must either be the natural parent of a child registered at the school, or be a person with parental responsibility for, or having care of, such a child.

In Maintained Nursery Schools parents of children for whom educational or other provision is made on the premises of the school at the time of the election are also eligible to stand for election and vote in a parent governor election.

If there are insufficient eligible candidates for the vacancies at an election the governing body can appoint a parent governor, but there are restrictions on who can be appointed.

Parent Governors normally serve for two years. If a parent governor ceases to be the parent of a child registered at the school within the period for which they have been elected, he/she may continue to be a governor for the rest of his/her term of office.

WHAT ARE PARENT GOVERNORS?

Parent governors have the same rights, responsibilities and duties as other governors.

Parent governors should play a full and active part in the governing body but,

Parent governors, like other governors, do not have the power to act as individuals or as a group, unless specifically authorised to do so by the governing body.

Parent governors are not on the governing body simply to represent the interest of parents, or to be the only link with parents because all governors must have regard to these issues.



WHAT DO GOVERNORS DO?

All maintained schools have a governing body which together with the headteacher sets the aims and policies of the school. The headteacher is responsible for the day to day management of the school. Together the governing body and headteacher must ensure the school provides good quality education and helps to raise standards.

The governing body:

- is accountable for the performance of the school to the parents and the wider community
- plans the school's future direction
- selects the headteacher
- makes decisions on the school's budget and staffing
- makes sure the National Curriculum is taught
- decides how the school can encourage pupils' spiritual, moral and cultural development
- makes sure the school provides for all its pupils, including those with special educational needs.

HOW MUCH TIME WILL IT TAKE?

To be an effective member of the governing body team, it takes time. You will need to prepare for and attend at least three full governing body meetings per year. These usually meet at least once a term.

WHAT SUPPORT IS AVAILABLE?

Lancashire LEA and the provide a wide range of support services and training for governors.

All new governors receive an introductory pack of materials from the LEA which outlines the range of training opportunities available to governors and governing bodies and provides the basic reference documents. There is also a termly newsletter which helps to keep governors up to date with recent developments.

If you require more information about being a governor speak to the headteacher at your child's school or contact Governor Services on 01257 516147, governors.central@lancashire.gov.uk .

Thank you for your continued support

Nicola Daniels-Green

Headteacher



Nursery's New Mobile App

We are going mobile. Follow the instructions below to receive important updates, regular reminders and newsletters via mobile notification.

Scan the QR Code below using your phone camera

Download the School Jotter 3 app

Click Guest Log in


Search for Ighthenhill Nursery School


Don't forget to switch your notifications on!




Never miss school notifications

Download the School Jotter Mobile App
today and you'll get:

 News and message notifications

 School calendar access

 Other links to useful resources

