



# St Hardulph's C of E Primary School

## School Newsletter



2023/24

6 October 2023

|           |    |
|-----------|----|
| Warwick   | 23 |
| Hastings  | 14 |
| Newark    | 15 |
| Edinburgh | 36 |

### Headteacher's Treat (for last week & this week)

Class 1: Martha  
Class 2: Zane  
Class 3: Harriet

### Headteacher's Awards

This week have been awarded to:

Violet Alex Oliver Harriet  
Eddie Lily A Isabelle Finn  
Joshua

### Attendance

Our whole school attendance target this year is 96.5%.

|         | % attendance<br>this year |
|---------|---------------------------|
| Class 1 | 99.9%                     |
| Class 2 | 97.9%                     |
| Class 3 | 97.8%                     |
| Total   | 98.3%                     |

Number of minutes lost this week due to children arriving late: 2

*May Christ dwell in your hearts through faith, as you are being rooted and grounded in love. Ephesians 3:17*

### St Hardulph's Church of England Primary School

Main Street, Breedon on the Hill, Derby, DE73 8AN  
Tel: 01332 862572

Email: [office@st-hardulphs.leics.sch.uk](mailto:office@st-hardulphs.leics.sch.uk)

Website: [www.st-hardulphs.leics.sch.uk](http://www.st-hardulphs.leics.sch.uk)

Twitter: @StHardulphs

Headteacher – Mrs Kelly Ellis

We have had a busy week in school, lots of learning and preparation for our Harvest service in school next week which families are welcome to join us for. Our Phonics and early reading workshops were well attended this week by parents and we will be adding further information to our school website for parents to access and support them when reading with their child at home. We thank the PTFA for arranging the school disco today and are sure the children have had a lovely time.

Early in the new year we will be taking Class 3 and members of the School Council to London to visit the Houses of Parliament - watch out for more details.

### Staffing Update

Today we have said goodbye to Mrs Farron and wish her well in her new school. We have appointed a new teaching assistant to join us full time and we are just completing the final recruitment checks and look forward to them joining us after half term.

### Year 2&3 Multiskills Festival - Thursday 12<sup>th</sup> October

Please can Year 2 and 3 **bring their PE kit to school to change into** on Thursday as they will all be going to Ashby School for the afternoon to take part in a multiskills festival with other schools from the Sports Partnership. Permission is covered through local area visits and the children will be transported on a minibus accompanied by school staff. They will have lunch in school as normal and will return in time for normal end of day arrangements.

### Football Team Coaching

We have arranged for Mr Bryan our sports coach to come into school to deliver some sessions to Years 4,5 and 6 to support our team games for taking part in football tournaments this year. Parents in these year groups will receive a letter with details about the sessions and days that PE is required.

### Harvest Produce

Our Harvest Service is in school at 9:00am on Thursday 12th October. We would be grateful for your contributions of non-perishable food items in support of Ashby Food Bank. Please send items in with the children **by Wednesday** at the latest.



### Trading Cards (Pokémon, etc.)

Trading cards must not be brought into school to swap.

If cards are brought into school without prior agreement, they will be kept by the teacher, or in the office and can be collected at the end of the day.

### 'Flu Immunisation

Thank you to all those parents who have already registered their children for the 'Flu immunization session on 6th November.

Please log in as requested (school details are on the letter attached to the email, not the email itself) to accept, or decline, immunization for your child.

A few parents have had an error message when trying to enter the school number on the system. You need to enter **LE120119** not just the number part.

### Trip Payments

Please see the box below showing payment deadlines for trips.

If you have not made payment before the deadline, please do so over the weekend. You may find that the prompt for the item on ParentPay disappears after the deadline day - you should still be able to find the item on ParentPay, it is just the prompt that has gone.

### Panto Trip (Class One)

Currently no one has requested a school packed lunch for the day of the Class One Panto trip. If your child will need a packed lunch on trip day (the class will arrive back in school too late for food to be kept hot), please email the office by Monday morning to let Mrs Russell know.



## Free School Meals Eligibility Checker

<https://pps.lgfl.org.uk>

LGfL

Help obtain government funding for your child's school in England!

Did you know the government gives additional funding to schools for those children entitled to free school meals (pupil premium)?

Schools use this money to obtain additional staff and resources that help improve the quality of education.

To find out whether your child qualifies for pupil premium, and hence whether their school would receive additional funding, please fill in the details requested on this site.

In addition, the following pupils will be protected against losing their free school meals (pupil premium) as follows:

- Pupils who were eligible on 1 April 2018, or who became eligible since then, continue to receive free meals, even if their household is no longer eligible under the benefits/low-earnings criteria, up until March 2025 and then until the end of their phase of education
- New applicants for free school meals on or after 1 April 2018, who are in receipt of Universal Credit and have earnings above the earned income threshold, will not be eligible for free school meals

The Universal Credit rollout is currently expected to complete in March 2025

We have made a couple of enhancements to the website, for further information please see the FAQ's, the enhancements are:

- A parent of a child attending any LGfL school can now use this website to check their eligibility.
- A Certificate of Eligibility is available through our website for any child eligible for a free school meal that is attending a school in England. The Certificate of Eligibility should be taken to your child's school.

**The above information can also be found on our school website.**

## Current Payment Deadlines

**Laches Wood deposits - Class 3**

**OVERDUE**

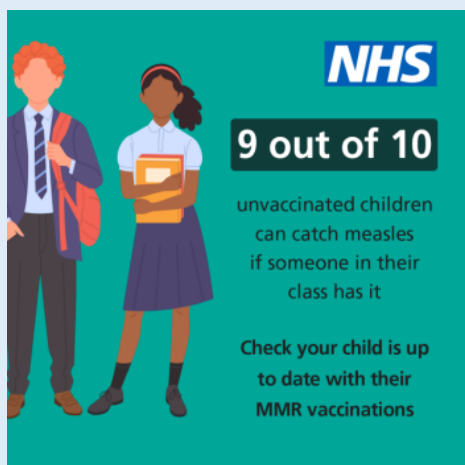
**Panto - Class 1**

**Deadline TODAY**

**Theatre Trip - Classes 2 & 3**

**Deadline TODAY**

## Measles / MMR



Over 102,000 children starting primary school in England are at risk of catching measles. With millions of children across the country going back to school, NHS England is urging parents to check that their children are up to date with their MMR (Measles, Mumps and Rubella) vaccinations in the wake of measles cases rising across the country. Childhood vaccination rates have fallen over the past ten years and this week statistics show that over 102,000 children aged four and five years old starting in reception are not protected against catching measles, mumps and rubella. Measles is highly infectious and if left unvaccinated nine out of ten children in a classroom can catch the disease if just one child is infectious. If you are unsure if you or your child are up to date, check your child's red book or GP records and make an appointment to catch up any missed doses. For more information on the NHS vaccination schedule, please [visit](https://www.nhs.uk/conditions/vaccinations/nhs-vaccinations-and-when-to-have-them/) <https://www.nhs.uk/conditions/vaccinations/nhs-vaccinations-and-when-to-have-them/>



*Flourishing lives, rooted in God, nurturing all.*



## Diary Dates

| 2023           | Who?                   | What   |
|----------------|------------------------|--|
| 11/10          | New Intake for Aut '24 | Open Morning 9:00 to 11:00am                         |
|                | New Intake for Aut '24 | Open Evening 5:00 to 6:30pm                          |
| 12/10          | All                    | Harvest Service in School 9:00am                     |
| 16 to 20/10    | All                    | Half Term break                                      |
| 23/10          | All                    | Staff INSET (school closed to children)              |
| 27/10          | New Intake for Aut '24 | Open Afternoon (Stay & Play) 1:30 to 3:00pm          |
| 06/11          | All                    | 'Flu Immunisation session                            |
| 07/11          | New Intake for Aut '24 | Open Afternoon (Stay & Play) 1:30 to 3:00pm          |
| 09/11          | New Intake for Aut '24 | Open Morning 9:00 to 11:00am                         |
| 22/11          | New Intake for Aut '24 | Open Evening 5:00 to 6:30pm                          |
| 24/11          | All                    | PTFA Non-Uniform – Bring a Bottle                    |
| 01/12          | All                    | Christingle Service at Church 9:15am                 |
|                | All                    | PTFA Christmas Fair 3:15pm                           |
| 07/12          | Classes 2 & 3          | The Lion, The Witch & The Wardrobe at Birmingham Rep |
| 08/12          | All                    | Christmas Jumper Day                                 |
| 11/12          | R/1/2                  | R/1/2 Christmas Performance 2:00pm                   |
| 12/12          | R/1/2                  | R/1/2 Christmas Performance 3:30pm                   |
| 13/12          | 3/4/5/6                | KS2 Christmas Performance 5:00pm at Church           |
| 18/12          | Class 1                | Peter Pan at Loughborough Town Hall                  |
| 19/12          | All                    | Childrens' Christmas Dinner                          |
| 22/12          | All                    | Last Day of Autumn Term                              |
| 25/12 to 08/01 | All                    | Christmas Break                                      |

### **Request from the Office**

It would be really helpful if you could let us know your child's name when emailing or calling when you have different surnames (or a different surname in your email address). Whilst Mrs Russell knows when names are different in most cases, especially where families have been with us for a while, it is really helpful to remove the need to check. Thank you.

**School information can be provided in different languages, large print, simple text only or Braille. Please speak to Mrs Ellis or the Office if you have a particular requirement.**



*Flourishing lives, rooted in God, nurturing all.*

