

Newsletter Autumn Term Week 1  
Friday 5th September 2025

Holy Family Catholic Primary School



*Jesus said "Let the children come to me"  
We live and learn and love in his way.*

### Spotlight on Welcome Back







*Jesus said "Let the children come to me"  
We live and learn and love in his way.*

*Catholic Life and RE - 'Building the Kingdom!'*



Welcome back

A big welcome back to all our children and families! I hope you all had a wonderful summer break, enjoyed the sunshine and the time to relax spending time with your family.

We were delighted to see everyone returning back or starting school with lovely smiles on their faces, and looking very smart in their uniforms.

I know the teachers are all so impressed already with how well they have settled in.

New School Year & Mission

This week we have been focusing on New Beginnings as part of our BTK curriculum. We started the week with a lovely assembly where I shared the theme for the year:



*'Fan the Flame of Hope'*



As we continue in this Jubilee year as Pilgrims of Hope we think about how we can fan the flame of our faith in our lives to ensure that we can have the courage to be the change we want to see in the world. We also reflected on our School Mission statement, what this means and how we will live by it during their time in Holy Family.

*Jesus said, "Let the children come to me." We live and learn and love in His way.*

Staff Commitment Mass

This Sunday, 7th September, we will be celebrating our Staff Commitment Mass at 10am. This will be a wonderful start to our new school year, so we look forward to seeing you there and celebrating together.

Welcome to Fr Charles

I'd like to welcome Fr Charles Miller as our new Parish Priest for Holy Family. Fr Charles started in our parish in August and I know he has already been out on the playground introducing himself to some of you. We are all looking forward to getting to know him and celebrating our faith with him.



### A Welcome message from Fr Charles from the Parish newsletter

Fr Charles would like to invite all parishioners & families to attend a once-a-month tea and coffee after Mass, starting on 7th September, in the church hall after the Sunday Mass. All are very welcome and warmly encouraged to come! It will be good to have the chance to catch up after the summer, have the chance to speak to people whom perhaps we have not met before and welcome newcomers and visitors to the parish.

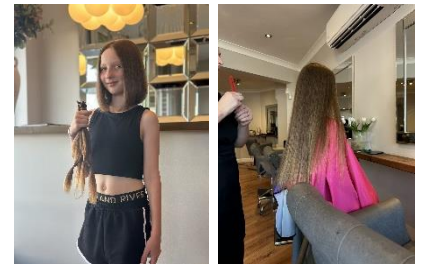


There will also be a lovely Knitting group: starting on the second Tuesday of the month, 10.00-11.00 a.m., starting 9th September, in the small parish hall. This is a monthly, not weekly, group. The group will make baby hats for the special care units in Walsgrave and George Elliot Hospitals, as well as twiddler muffs for those with dementia, etc, please keep a look out on the parish newsletter ([see here](#)) for community events at the church & parish.

### Act of Kindness



We would like to say a very big well done to one of Y6 children, Isla, who has bravely cut her hair to donate it to the Princess Trust. We are very proud of you for this lovely act of kindness. Well done.



Please can I ask that all parents read this newsletter, follow us on twitter and use our website to keep up to date with all the key dates and everything that will be happening this year.

Please can all parents also install all our school apps.

These are our main forms of communication and we don't want you to miss any dates or events. Thank you.



### Y1 -Y6 Data Collection

Please can I ask that you all check over your SIMS parent lite app information. This is where we hold all your child's information, therefore it must be updated. In case of an emergency, we require, at least 2 contacts to be added, we also require email addresses and the correct home address. If you have any problems logging onto this app please contact the school office on 02476 333631 who will be happy to assist, if any of the data changes throughout the year please let the school office know.



All Parents should have received an email reminder to do this. **If you are in YR or Y1** you will have received an email invitation asking you to register your account. Once you've registered with your unique code you can sign in using your web browser at [www.sims-parent.co.uk](http://www.sims-parent.co.uk). You can also use the app for convenience when you're out and about. This will now be in place of the paper data collection sheets. It is highly important that we hold the correct information at school therefore we expect all parents to activate their account. If you experience any difficulties. [Click here to view a SIMS Parent Lite App Parents Guide](#) All data needs to be updated before Friday 29<sup>th</sup> September.

### School Term Dates

Please see the term dates attached and make a note of the holidays and **teacher training days** when the children are not in school.

I would like to remind you that school holidays are not permitted during term time, and any absence for exceptional circumstances should be requested using our exceptional leave form **before** any bookings are made.

### Nursery & Reception

Our new children in Nursery and Reception have had their first sessions this week and have settled in wonderfully. We look forward to getting to know them and their families over the year. Nursery & Reception we will be communicating with you via **Tapestry**.

### Class Fund

We are very grateful to all the families who pay this as this enables each class to purchase additional resources for your child/class. Class fund for the Autumn term can now be paid via the school gateway. At the end of each year, we will publish a breakdown of how the fund has been used for each year group.

### Food Allergies



Please can we remind you that **we have NO EGGS or NUTS or SEEDS to come into school in your child's packed lunch.**

It is highly important that items such as chocolate spread are not given to the children in their lunch as some chocolate spreads advise traces of nuts, we also like to promote healthy eating and that

is not a healthy option, also eggs in sandwiches and Cereal bars with nuts in, as these can be fatal to some of our children.



### PE Uniform

Your child's class teacher should have been in touch this week to let you know which days your child will be taught PE. Lessons will start next week. Please ensure your child is wearing the correct clothing for PE:

- Yellow Holy Family t-shirt
- Blue shorts
- Navy jogging bottoms (Plain – no logos)
- Navy sweatshirt (Plain – no logos)
- Trainers

All uniform can be purchased from Clive Mark or Senik. Sweatshirts and jogging bottoms should NOT be branded or have any other logo other than Holy Family. As always, earrings are not permitted.

### After school sports activities

Communication will be sent **next week** advising parents of the activities available to your child and also the live date on gateway to sign your child up.

### Merit assemblies

Merit Assemblies will be taking place on Friday mornings at 9.05am starting next week. It's very important that we hold the correct contact details on SIMS for you to be invited in to assembly to see your child receive the weekly merit. If we are not able to hold the assembly on the Friday morning due to Masses or other events the office will advise in text that they will be given in class at 3pm the office will send a message advising that it will be given in class.

### Admissions Reception-September 2026

The online facility for applying for a place in our reception classes is now open until 15th January 2026. The web address is: [www.coventry.gov.uk/school-admissions](http://www.coventry.gov.uk/school-admissions). Please remember that parents are responsible for providing a copy of their child's Catholic Baptism Certificate to the school by the closing date on 15 January 2026. Our preferred method is to email this via [admin@hollyfamily.coventry.sch.uk](mailto:admin@hollyfamily.coventry.sch.uk) Failure to do this will result in your child being ranked as non-Catholic and this could affect their place.

### Nursery Admissions Applications

Application forms will be available via our website from during October the date is still to be confirmed. The closing date for applications is **15th January 2026**.

### Secondary Admission Applications

To all Year 6 parents - applications are now open for you to apply for your child's secondary school the closing date will be 31<sup>st</sup> October 2025. [Please click here](#) if you haven't already applied. If you are still unsure of where to apply, Secondary schools are holding Open evenings over the next couple of weeks.

### Cardinal Newman Open Evening

Cardinal Newman is our local Catholic Secondary school, and we are one of their main feeder schools. It is a wonderful school that has excellent pastoral care and by choosing to send your child there they can continue their journey of faith whilst receiving a high-quality education. Please go and have a look to see what they can offer.

**Wednesday 24<sup>th</sup> September 5.30pm -7.30pm**

### School Nursing

**We have been given very useful information from our school nursing team, so please take a look at the poster attached for more help & healthcare support.**

### A FANTASTIC OPPORTUNITY FOR PARENTS – Do you want to know how you can build interactions with your child?

We are very lucky to have been offered a 'Positive Family Foundations' course which will be run here in school starting on Monday 15th September in the afternoon. This course will focus on interactions between parents and children, and is designed to be supportive and helpful. It is available for a small number of parents and is a very friendly session, with tea and coffee provided. If you are interested, please reach out to Mrs Lanphier or Mrs Twycross via dojo.

### Positive Family Foundations

Please see attached poster for help & support for parents with positive family foundations.

### School Food United

Please remember to order you child's meals on **Sunday evening for the week.**



### Rock Steady

Please [click the link](#) for any parents interested in signing your child up for 'Rock Steady', who come in and deliver personalised band sessions to help children grow with their interest in music and singing.

Have a lovely weekend  
Mrs G Griffiths  
Headteacher

Attendance & Punctuality for this week							
Whole School attendance 94.8%							
		Year 1	Year 2	Year 3	Year 4	Year 5	Year 6
Attendance		96.8%	93.3%	99.4%	94.9%	94.8%	96.7%
Well done to Y3 for 99.4% the highest attendance this week!							



# School term dates 2025-2026

## August 2025

Mon	Tue	Wed	Thu	Fri	Sat	Sun
				1	2	3
4	5	6	7	8	9	10
11	12	13	14	15	16	17
18	19	20	21	22	23	24
25	26	27	28	29	30	31

## September 2025

Mon	Tue	Wed	Thu	Fri	Sat	Sun
1	2	3	4	5	6	7
8	9	10	11	12	13	14
15	16	17	18	19	20	21
22	23	24	25	26	27	28
29	30					

## October 2025

Mon	Tue	Wed	Thu	Fri	Sat	Sun
		1	2	3	4	5
6	7	8	9	10	11	12
13	14	15	16	17	18	19
20	21	22	23	24	25	26
27	28	29	30	31		

## November 2025

Mon	Tue	Wed	Thu	Fri	Sat	Sun
					1	2
3	4	5	6	7	8	9
10	11	12	13	14	15	16
17	18	19	20	21	22	23
24	25	26	27	28	29	30

## December 2025

Mon	Tue	Wed	Thu	Fri	Sat	Sun
1	2	3	4	5	6	7
8	9	10	11	12	13	14
15	16	17	18	19	20	21
22	23	24	25	26	27	28
29	30	31				

## January 2026

Mon	Tue	Wed	Thu	Fri	Sat	Sun
			1	2	3	4
5	6	7	8	9	10	11
12	13	14	15	16	17	18
19	20	21	22	23	24	25
26	27	28	29	30	31	

## February 2026

Mon	Tue	Wed	Thu	Fri	Sat	Sun
					1	
2	3	4	5	6	7	8
9	10	11	12	13	14	15
16	17	18	19	20	21	22
23	24	25	26	27	28	

## March 2026

Mon	Tue	Wed	Thu	Fri	Sat	Sun
					1	
2	3	4	5	6	7	8
9	10	11	12	13	14	15
16	17	18	19	20	21	22
23	24	25	26	27	28	29
30	31					

## April 2026

Mon	Tue	Wed	Thu	Fri	Sat	Sun
		1	2	3	4	5
6	7	8	9	10	11	12
13	14	15	16	17	18	19
20	21	22	23	24	25	26
27	28	29	30			

## May 2026

Mon	Tue	Wed	Thu	Fri	Sat	Sun
				1	2	3
4	5	6	7	8	9	10
11	12	13	14	15	16	17
18	19	20	21	22	23	24
25	26	27	28	29	30	31

## June 2026

Mon	Tue	Wed	Thu	Fri	Sat	Sun
1	2	3	4	5	6	7
8	9	10	11	12	13	14
15	16	17	18	19	20	21
22	23	24	25	26	27	28
29	30					

## July 2026

Mon	Tue	Wed	Thu	Fri	Sat	Sun
		1	2	3	4	5
6	7	8	9	10	11	12
13	14	15	16	17	18	19
20	21	22	23	24	25	26
27	28	29	30	31		

Summer bank holiday

25 August 2025

Christmas Day

25 December 2025

Boxing Day

26 December 2025

New Year bank holiday

1 January 2026

Good Friday

3 April 2026

Easter Monday

6 April 2026

May Day holiday

4 May 2026

Spring Bank holiday

25 May 2026

Term  
time



Holiday



Bank  
holiday



Weekend



LA set  
training day



Secondary  
Induction Day



+ 4 set by the school

### Teacher Training Days

Monday 3rd Nov 2025

Monday 5th Jan 2026

Monday 1st June 2026

Monday 20th July 2026

[www.coventry.gov.uk/termdates](http://www.coventry.gov.uk/termdates)



# Starting school?

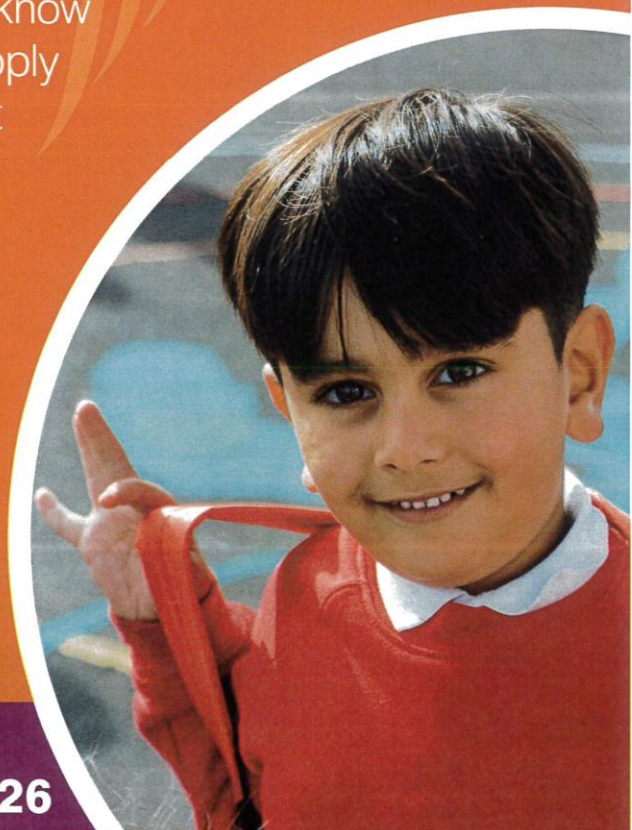
**Children born between  
1 September 2021 and 31 August 2022  
can start school in September 2026**

**Take action now**

You can find out all you need to know  
about school admissions and apply  
online from 1 September 2025 at  
**coventry.gov.uk/  
schooladmissions**

or you can telephone school  
admissions on **024 7697 5445**

Apply in time to give your child  
the best chance of getting one  
of your preferred schools.



Apply online by  
**15 January 2026**



**coventry.gov.uk/schooladmissions**



# Starting Secondary School in September 2026

Apply online at  
**coventry.gov.uk/schooladmissions**  
by **31 October 2025**

for children born between  
1 September 2014 and 31 August 2015

<b>31 October 2025</b>	Closing date for all applications
<b>31 December 2025</b>	If you move house before the 31 December 2025 you <b>MUST</b> contact the School Admissions Team to update your address
<b>2 March 2026</b>	Result emailed by 5pm or details available in your online account
<b>4 March 2026</b>	Parents who submitted a paper application will receive the result by letter



Please go to our website at  
**coventry.gov.uk/schooladmissions**  
for details on how to apply. For further help  
call School Admissions on **024 7697 5445**





Coventry Family Health & Lifestyle Services  
School Nursing  
Family Health Division  
Moat House Leisure & Neighbourhood Centre  
Winston Avenue  
Coventry  
CV2 1EA

Telephone: 01926 495321 extension 7494  
Text Parent Line: 07507329114  
Email: [swg-tr.contactschoolnursescoventry@nhs.net](mailto:swg-tr.contactschoolnursescoventry@nhs.net)

Dear Parent / Legal Guardian

We would like to welcome you and your child to the School Nursing service. As from September, they are starting school so the care of your child will be transferred from health visiting to School Nursing.

The School Nursing Team in Coventry work with children, young people and families to live healthy lifestyles and receive appropriate health support when needed. The School Nursing team also work closely with schools and the local authority to ensure that health and wellbeing is supported within your child's school.

It is important that we review all children's health as they start school, to enable a smooth transition and ensure that your child is supported in the best way that they can be in their early years of school. To do this, we would like **all parents/carers to complete our online health questionnaire**. (As part of the national Healthy Child Programme). **This questionnaire is available in 90 different languages.**

The questionnaire provides an opportunity to identify any new, or on-going health needs that your child may have and require additional support with. The service will follow up any child who may require support following completion of this questionnaire. All health-related information is kept confidential but, in some instances, (medical conditions that require management in school, i.e. asthma) this may be shared on a need-to-know basis with some other services, including the school, to be able to better support your child in school.

Please click on the link below or use the QR code attached to fill in your child's online health questionnaire. (This is best done through Chrome)

<https://forms.chathealth.nhs.uk/index.php/739833?lang=en> or use the QR code



---

Chair: Russell Hardy

Chief Executive: Glen Burley

To access the questionnaire in a different language, when you reach the front page, if it is easier for you to access the information in a different language you will need to Click on



This will then open the tool bar below at the top of the page and then click on the A in the tool bar and this will give you a list of different languages.



If you have a problem with the link please contact the school nursing team by texting them on 07507329114 or email us at [Swg-tr.contactschoolnursescoventry@nhs.net](mailto:Swg-tr.contactschoolnursescoventry@nhs.net)

Once you have completed your child's health questionnaire, you will receive an individualised health care plan with useful hints and tips to support the continuing healthy development of your child.

The school nursing team review the information, and it is saved in your child's health record.

Should you wish the school nursing team to contact you to discuss any concerns that you have regarding your child's health and wellbeing, you can request this on the very last question of the questionnaire.

However please note that whilst your child is in primary and secondary school, and you have a health question, you can contact our service at any time.

#### Supporting your child to be school ready.

It is a good idea to encourage your child to start to take care of themselves and to practice this over the holidays before school starts, for example with:

Putting on and off their coat and shoes

Using cutlery and drinking from an open cup

Going to the toilet by themselves and not wearing pull ups.

We have developed some useful videos to help you with a range of frequently requested topic areas. Please use the QR codes to view to information:

#### **Toileting Advice:**



#### **Sleeping tips:**



#### **Behaviour Challenges:**



---

Chair: Russell Hardy

Chief Executive: Glen Burley

Holy Family Catholic Primary School, Penny Park Lane, Coventry, CV6 2GU Tel: 02476-333631

Email: [admin@holyfamly.coventry.sch.uk](mailto:admin@holyfamly.coventry.sch.uk)

Website: [www.holyfamily.coventry.sch.uk](http://www.holyfamily.coventry.sch.uk)





### Understanding Anxiety:



### Challenges in Eating:



During the reception year we offer the opportunity to have your child measured as part of the National Child Measurement Programme and also offer hearing screening clinics in the local family hubs. Please see attached a poster with the information on the hearing screening clinics. We also share lots of health information during the year through the school nurse newsletters that we send into schools.

We would also like to take the opportunity to remind you that all children should be accessing the following services.

1. **Dentist.** It is important that your child is registered with a dentist and attends regular appointments. Dentist care for children is free. If you require information about how to register with a dentist please call the NHS Helpline on 111 or go to [www.nhs.uk](http://www.nhs.uk) to find a dentist near you.
2. **Immunisation uptake.** It is a good time to ensure that your child has received all of their childhood immunisations. If you want more information please contact your GP or practice nurse for more information. Please note the school nursing do not carry out immunisations.
3. **Free school meals.** All children who attend a state school are entitled to receive free school meals in reception, year 1 and year 2. For more information, please speak to your child's new school.
4. **Reading.** Reading Well are a range of books available from your local library and provides children with stories and advice to support their emotional wellbeing discussing a range of managing emotions. For example:



Coventry School Nursing Team now provide an 9am to 5pm parent text service 07507329114. Alternatively, you can call us on 01926 495321 extension 7494.

Yours sincerely  
Emma Austin  
Clinical Lead in School Nursing

Coventry Family Health and Lifestyle Services



@coventryfamilyhealthandlifestyleservice



@CoventryFHLS

Chair: Russell Hardy

Chief Executive: Glen Burley



# COVENTRY SCHOOL NURSING

## A GUIDE FOR PRIMARY SCHOOL PARENTS

The Coventry School Nursing service provides vital resources enabling you to build your child's emotional and mental resilience. As your child grows so do their needs. This guide aims to support you and your child during the primary school years, building on the support you received from the health visiting service.

### PARENTING SUPPORT

Parenting can pose challenges as you guide your child through the various stages of Primary School. The School Nursing team are here to assist by providing guidance, referrals, and connections to suitable agencies.

Below are parenting videos the school nursing team have created in response to many parents requesting support in these areas. Additionally we also offer hearing screening clinics for reception aged children.

[WWW.NHS.UK](http://WWW.NHS.UK)


Explore the NHS website for detailed information on healthcare services, medical advice and support resources.



SCAN HERE

**ChatHealth for parents in  
Coventry**  
**07507 329114**



ChatHealth is a free service for parents to send confidential SMS messages to School Nurses for impartial health advice and support. Available anytime, replies are provided during opening hours (9am – 4:30pm, Monday to Friday) for various health issues.

**Toileting Advice**






**Sleeping Tips**




**Behaviour Challenges**




**Understanding Anxiety**





**Challenges in Eating**




**Hearing Screening**

Did you know that we offer free audiology clinics for children in reception class? For further information, please contact the team via email address in the footer.



01926 495321 Ext 7494  
swg-tr.contactschoolnursescoventry@nhs.net



ChatHealth: 07507 329 114 (Parent Line)

ChatHealth: 07507 331 949 (For 11-19 year olds)



Coventry School Nursing Team

COVSCHOOLNURSES

## SCHOOL NURSE SUPPORT SERVICES

Alongside the support services outlined on page one, we also provide the following:

- Nutritional and dietary support
- Delivering the National Child Measurement Programme (NCMP) for reception and year 6 students
- Puberty advice
- Year 6 Health Questionnaires

- Emotional well-being and relaxation advice
- Parent health questionnaires (completed the summer term before your child starts school).
- Social media: we regularly share advice and information about our services on our social media pages (links provided in the footer).
- School Nurse Newsletters: we regularly distribute newsletters through schools, covering various topics and providing health and lifestyle advice.

### IF YOU HAVE ANY OF THE BELOW CONCERNS, CONTACT...

#### Pharmacist & Self Care

Graze, cold Symptoms, sore/sticky eyes, sore throat, cold sores, diarrhoea or constipation, indigestion, aches and pains, repeat prescription service.



#### Dentist

Tooth pain, swelling to your mouth, injury to your mouth, pain or bleeding gums, and advice on oral hygiene.



#### Optician

Blurred vision, pain in or around your eye, reduced vision, flashes, and floaters.



#### GP

A range of clinicians, including doctors, nurses and sometimes physiotherapists to help you with both mental and physical health issues.



#### 111

If you need non-emergency advice or same-day attention when your GP is unavailable, call NHS 111-24/7.



#### Minor Injuries Unit

Cuts and minor burns, sprains and strains, suspected broken bones and fractures.



#### A&E or 999

Suspected heart attack or stroke, chest pain, breathing difficulties, severe bleeding, unconscious, serious burns.



#### Testicular Torsion Awareness

Testicular Torsion is a serious emergency that occurs when the testes twist, resulting in severe pain. If your son complains of sudden severe testicle pain or testicle pain for more than an hour, go to A&E.



More info



### What are the Year 6 Questionnaires?

We offer all year 6 students the opportunity to complete a health questionnaire about them. They will receive a health care plan to support them with making healthy choices. All health questionnaires are reviewed and if required the student will be given the opportunity to speak to one of the school nurses.

### HOW TO CONTACT YOUR SCHOOL NURSING TEAM

The school nursing service operates Monday to Friday 9am - 4.30pm, excluding public and bank holidays. You can reach us using the contact details provided in the footer:

01926 495321 Ext 7494

swg-tr.contactschoolnursescoventry@nhs.net



ChatHealth: 07507 329 114 (Parent Line)

ChatHealth: 07507 331 949 (For 11-19 year olds)



Coventry School Nursing Team

COVSCHOOLNURSES



# Find out more about raising happy, secure, and well-behaved children

Join our free, friendly and supportive course –  
**'Positive Family Foundations'**

## This course is for

All Coventry parents and carers with children aged 0-10

## What we do

- share information about child development and parenting styles
- give out practical resources and activities
- provide a welcoming and inclusive group
- have a drink and a snack

## Where /when it is

Hearsall School, Earlsdon, 1-3pm

or

Telfer Road Adult Education Centre, Radford, 6-8pm  
Every Tuesday from 16th September (the course is the same in each venue so chose the best time slot for you. Attend the same venue each week.)

## How to join

Scan the QR code to enrol or enrol online at  
<https://coventry.gov.uk/adulted>



To find out more email [aeslifeskills@coventry.gov.uk](mailto:aeslifeskills@coventry.gov.uk)

**\*Assume you have a place unless you hear from us \***



*"It was great to listen to other parents. There were lots of ideas on the course - I found the section on Emotion Coaching really helped at home."*



# Find out more about raising happy, secure and well-behaved children

Join our free 10-week online course  
**'Positive Family Foundations'**

free  
online  
course

## This course is for

All parents and carers with children aged 0 - 10  
in Coventry

## What you'll learn

How children develop with practical examples  
to support behaviour, well-being and mental health

## What we do

- email you a new 30-minute course video each week
- give you digital resources to help your learning
- answer any questions you've got by email

## Where it is

A pre-recorded online course to watch where and  
when you like

## When it is

Online, from Monday 15<sup>th</sup> September for 10 weeks

## How to join

Scan the QR code to enrol



View all Family Learning courses and enrol online at  
[www.coventry.gov.uk/adulted](http://www.coventry.gov.uk/adulted)



*'I found out loads  
of different ways  
to help my son  
feel calmer'*

**\*Assume you have a place unless you hear from us\***



Holy Family Catholic Primary School, Penny Park Lane, Coventry, CV6 2GU Tel: 02476-333631

Email: [admin@holyfamily.coventry.sch.uk](mailto:admin@holyfamily.coventry.sch.uk)

Website: [www.holyfamily.coventry.sch.uk](http://www.holyfamily.coventry.sch.uk)

