



NEWSLETTER

Rufford C. of E. Primary School



Flash Lane, Rufford, Ormskirk, Lancashire, L40 1SN

Date: 7th November 2025

Together in Faith and Learning

Our first week back's Shining Stars!

Little Squirrels: Forest



Oak: Bea, Fiadh, William

Ash: Max, Francesca, Tobias

Maple: Albie, Teddy, Theo

Elm: Maisie, Jeffrey



Rowan: Orla, Jack, Olly

WWJD

What Would Jesus Do?

Oak: **Sam** – for the value of **perseverance** and trying hard with his writing

Ash: **Connie** – **perseverance** – Connie kept on going during her PSHE lesson when the class were doing a task that she was finding hard!

Maple: **Ruby** – for **friendship**. For being herself and making good friends since starting at Rufford.

Elm: **Jamie** – for being **thankful** for his gift of amazing general knowledge to share with others.

Rowan: **Jacob** - For looking after our younger children so well, showing **compassion**.



What has stuck with us this week?



Little Squirrels: 'The birds eat the red berries, we can't eat them, we'd be sick!'

Dolly

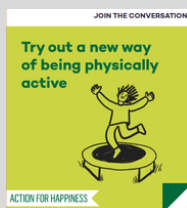
Oak: "I love our new pumpkin patch!"

Ash: 'The five senses are see, hear, taste, smell and touch' **Tobias**

Maple: 'South America has the Amazon Rainforest! We learned about it last year and now we are learning about it in Geography!' - **Tillie**

Elm: Boudicca was the queen of the Iceni tribe who led a rebellion against the Romans – **Bella & George**

Rowan: 'I am confident at using the method for long multiplication.' **Harry**



Join us for new ways November!

We have all tried something new this week!

Oak: We have been making plans for the month ahead!

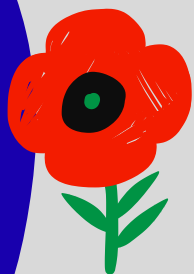
Ash: This week Ash Class have been creative, decorating stones to remember the events of WW1.

Maple: Make a list of the new things you want to do this month.

Elm: Try out a new way of being physically active - rugby

Rowan: We have chosen new things we would love to try!

'Let your light shine in the world' (Matthew 5:16)



Rowan Class Community Remembrance

10.30am 11th November 2025

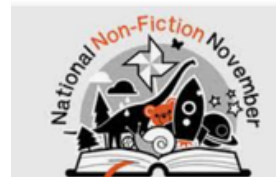
Join us to mark this important occasion with Rowan Class taking the lead. We also have Iain Parks, Director of Education at Blackburn Diocese joining us there too. Gates open at 10.30 on Flash Lane.

Stones will be coming home to hide around Rufford tonight!



Not a stone's throw from you, scattered around our village by Rufford school children, are painted Remembrance Pebbles. When you see a pebble pick it up and take it to church and place it at the Remembrance Tree which is on the right as you go through the entrance opposite the Old Hall gates. In this way we carry our thoughts of those who died for us!

"We will remember them"



Non Fiction November!

Every day throughout November every class in school will be exploring and celebrating non fiction books. Children are welcome to bring in their own favourites to share!

All we can for BBC Children in Need!



Friday 14th November



Non Uniform - spotty theme or Pudsey theme!

Pay a £1 and come to school in non uniform and take on our silly all you can challenges to celebrate Children in Need!

Our next open morning this coming Thursday! Remembrance and nursery rhyme themed.

Please spread the word!

Do you know someone looking for a reception place this coming September?

Rufford C. of E. Primary School

'Together in faith and learning'



Open Mornings

Come and stay, play and discover our Little Squirrels pre-school and Reception Class and meet our school dog, Barney!

Tuesday 4th November 2025 9.15-11.30

Thursday 13th November 2025 9.15-11.30



Reception places available for September 2026!

Pre-school places available now!

Our children are nurtured in a positive, safe and stimulating environment, which is underpinned by our Christian values, allowing them to flourish and be lifelong learners.

If you are unable to attend, don't worry!

Contact Mrs Shaw in our school, office to book an appointment. 01704 821300 or email bursar@rufford.lancs.sch.uk



Faith in the Forest



Hattie led the first of our Faith in the Forest sessions on Wednesday with Maple Class. The children explored our Christian Value of compassion and made small animal shelters to look after the wildlife. We then discussed how we can look after people in our world who need compassion to be shown to them. Finally, we wrote our own messages of compassion to hang on the trees.

Friends of Rufford

AGM

Annual General Meeting

Everyone is welcome.
Stay informed and get involved.

Hesketh Arms
Monday 10th Nov at 7.15pm

ST MARY'S CHURCH, RUFFORD CHRISTMAS EVENT

SAT 6TH DECEMBER 2.00PM - 4.00PM
RUFFORD VILLAGE HALL, L40 1SW

Visit Santa and Mrs Claus in their magical Grotto
Contact Nicola on 07463107097
Hurry as tickets are limited.

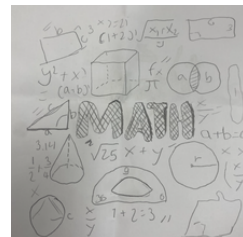
Join in the festivities

- Handmade Craft Stalls
- Refreshments
- Grand Raffle and much more

ADMISSION £1, CHILDREN FREE

Key Term Dates: New dates!

- **W/C 10th November** - World War One Week
- **11th November** - Community Remembrance. Rowan Class to lead.
- **13th November** - Little Squirrels Stay and Play Open Morning!
- **14th November** - Children in Need
- **17th November** - we celebrate Maths Week England in school



- **Friday 28th November** - Tarleton Light Switch on - Rufford Choir singing!
- **Monday 1st December** - Advent prayer spaces retreat day. School Council cookie sale.
- **Wednesday 3rd December** - Faith in the Forest Elm Class
- **SATURDAY 6TH DECEMBER** - Christmas fair!
- **Thursday 11th December** - Christmas lunch and carol service.
- **Monday 15th December** - Polar Express comes to Rufford! Come to school in your pjs, wait for the whistle, grab your ticket and hear the bells!
- **Monday 15th December** - Nativity Afternoon performance
- **Tuesday 16th December** - back in school for 5.15pm in costume for a 5.30pm prompt start.
- **Friday 19th December** - School closes for Christmas.



Our Week in Pictures!

