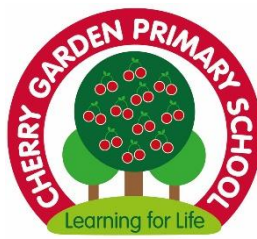


Newsletter

Week Ending: 08/05/26

Term 5 - Issue 3



www.cherrygardenprimary.co.uk

Headteacher's Message

It has been another wonderful week at Cherry, and I would like to take a moment to recognise the incredible people who make our school such a special place.

Firstly, my sincere thanks to our dedicated staff team, who work tirelessly each day to support, nurture and inspire our children. Their commitment, care and professionalism truly make a difference.

To our children, thank you for the warmth, joy and enthusiasm you bring to school every day. You are at the heart of everything we do, and it is a privilege to see you grow, learn and shine.

We are also incredibly grateful to our families for your continued support. A special thank you to those who have kindly donated plants and to the volunteers who have given their time to help with gardening. Your contributions are helping to make our school environment even more welcoming and vibrant for everyone.

Cherry is a strong community, and it is through working together that we continue to thrive.

A message for Year 6 from the staff at Cherry

TO OUR AMAZING
YEAR 6

GOOD LUCK FOR YOUR SATs! ☆



DO YOUR BEST

Try your hardest and be proud of that.



STAY CALM

Take a deep breath, you've got this!



BELIEVE IN YOU

You are clever, capable and ready.



Remember, tests are just one part of your story – they do **NOT** show how amazing you are!



WE ARE SO PROUD OF YOU!

– ALL THE STAFF ♡

What do we expect each child to bring to school?

We have recently seen an increase in children arriving at school without the necessary items for a successful day, as well as some children bringing additional items that are not required.

As a reminder, every child should bring the following each day:

- their reading book and planner
- a named, filled water bottle
- a packed lunch, if required



Depending on the weather, children should also bring a coat or appropriate additional layers. Jumpers and coats must be named.

Children should not bring toys into school. This includes small resin figures (such as those pictured) and fidget aids that have not been agreed by the SENCo following a sensory questionnaire or classroom observation. This helps us to keep learning environments clear, calm and purposeful, and also reduces the risk of items being lost or damaged.

Thank you for your continued support

Term Dates 2026/27

Term 1	Thursday 3 September 2026	Friday 23 October 2026
Term 2	Monday 2 November 2026	Friday 18 December 2026
Term 3	Monday 4 January 2027	Friday 12 February 2027
Term 4	Monday 22 February 2027	Thursday 25 March 2027
Term 5	Monday 12 April 2027	Friday 28 May 2027
Term 6	Monday 7 June 2027	Friday 23 July 2027

Inset days:

September 3rd and 4th 2026

Summer term events

Please see below some of the dates of key events during the Summer term:

SATURDAY 16th May – Magic forest volunteer day

10th – 12th June – Year 6 camp

24th June – Sports day

(1st July reserve sports day)

10th July – Summer Fayre

21st July – Last day of term 6; Year 6 leavers assembly

Multi skills festival

Well done to these amazing Athletes who represented Cherry in the Multi skills festival at Mangotsfield school. They enjoyed a mixture of pickle ball, gold, tennis and American football!



Award Winners:

VIP Awards: Billy

Teachers' and Reading Raffle Awards

Reception: Brodie A & Freddie S & Mollie

Year 1: Thea & Olivia

Year 2: Harrison & Jack

Year 3: Bea & Ava

Year 4: Aluna & Charlie C

Year 5: Ria & Henry Mgs

Year 6: Stan & Emma

Eco Award: Year 2



DIRECTORY

A huge thank you to all our directory sponsors whose generosity helps us to keep all of our clubs free for all children. If you have know of a company, that would like to advertise in the Directory, it costs only £5 per term.



**HOUSE CLEARANCE
GARAGE CLEARANCE
GARDEN CLEARANCE
GENERAL RUBBISH CLEARANCE**

FULLY LICENSED AND INSURED

MINIMUM COLLECTION FROM £49 - FREE QUOTATIONS

Visit us: www.junkmonsters.co.uk

Email us: info@junkmonsters.co.uk

Call us: 07592 506 003

Dates For Your Diary

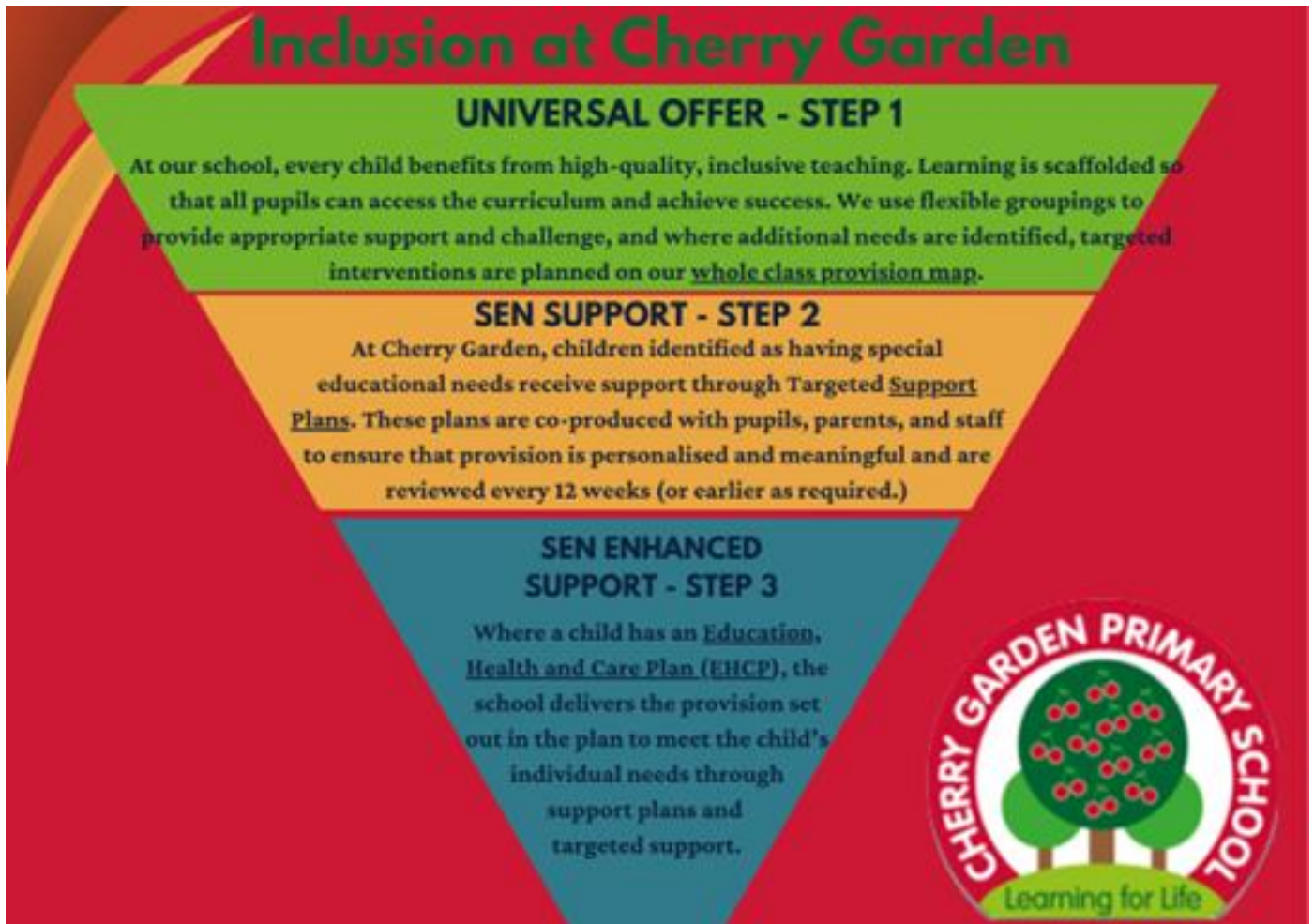
20.4.26	First day back Gardening club begins
22.4.26	CSET sports coaching – Y5 and 6 and focus group (email information sent to families involved)
24.4.26	First enrichment for years 1, 2 and 3
28.4.26	CSET sports coaching
5.5.26	CSET sports coaching
7.5.26	Class photos
Week commencing 11.5.26	SATs week including SATs breakfast
SATURDAY 16 th MAY	Forest volunteer day
18.5.26	5.30pm Camp meeting
22.5.26	Y6 celebration assembly End of term 5

SEND at Cherry Gardens

With increasing discussion in the media around SEND and inclusion in schools, we would like to take the opportunity over the coming weeks to share how we approach this at Cherry.

In this edition, we have included a guide to our phased approach to inclusion. This framework is used by staff to support their decision-making around provision, support and interventions for every child, ensuring that all pupils receive the right support at the right time.

We look forward to sharing more about our inclusive practice in future newsletters



Reception starters 2026

We are so excited to start welcoming our next cohort of children to Cherry Garden school. If you or anyone you know has a child starting in September, please remind them of our pre-school sessions. Each session starts at 2.30pm and is led by our Early Years team.

Monday 18th May – Gymnastics in the hall

Thursday 11th June – Story time (in correct day given last week, sorry)

SEND Reform: Putting Children and Young People first.

The proposals include a wide range of potential changes, such as new expectations for schools, clearer guidance on reasonable adjustments, new Inclusion Bases in schools, additional training for staff, and improved access to specialist expertise through a model called “Experts at Hand.”

At the heart of the proposals is a vision to strengthen inclusive practice in mainstream education, with a more consistent, rights-based approach so that children’s needs are recognised and supported earlier.

However, it is important to be clear that there remains many questions.

We are now in a 12-week consultation period.

There are two ways that you can have your say:

- 1.Through the Government Consultation Survey on SEND reform - Closing Date 11:59pm 18 May 2026,
- 2.Through South Glos Parent Carer Forum’s bite size surveys.

- Support is changing
- National Inclusion Standards
- Targeted and Targeted Plus
- Specialist Packages and EHCPs
- Funding, Transitions and Alternative Provision
- What if my child doesn’t fit?
- Complaints process, Accountability and Judicial Review
- And finally...



Find out more about the proposals and take the surveys.

SCAN HERE



Signposting to South Glos Parent Carers

No diagnosis is needed to access our services.

You can tag us on Facebook: [@sgpc.community](https://www.facebook.com/sgpc.community)

How to share

pdf files can be shared by email or printed for use on displays.

png files are ideal for class dojo and other school messaging apps, as well as including in a newsletter or as a social media post.

Please note, if sharing the png file you should ensure that your message also includes the direct link. People are often reading on their phones making it tricky to scan the QR code to access the guide

Please copy and paste the following into your newsletter, messaging app or social media post.

SEND reform: Putting children and young people first.

Since the Government White Paper and Consultation was published there has been a lot of discussion and questions raised around the changes which have been proposed.

These proposals are part of a **national consultation process**, which means they will be discussed, reviewed, and may change before anything is implemented.

As your local parent carer forum, South Glos Parent Carers (SGPC) have put together an overview of the changes and a series of bitesize surveys to ensure your voice is heard in the consultation.

For details and to take part, visit the SGPC website: <https://sgpc.org.uk/schools-white-paper>

It is important that you have your say about the proposals.