

Newsletter

Week Ending: 15/05/26

Term 5 - Issue 4



www.cherrygardenprimary.co.uk

Headteacher's Message

It has been another fantastic week at Cherry, and I would like to take a moment to celebrate all that has made it so special.

Firstly, a huge well done to our wonderful Year 6 children, who have approached their SATs this week with such resilience, maturity and determination. We are incredibly proud of the way you have conducted yourselves—you have truly shown what it means to be the very best version of yourselves. Whatever the outcomes, you have already achieved something very important, and we celebrate you.

As we come to the end of what has been a short but incredibly busy half term, I would like to thank our whole school community for the energy, commitment and positivity shown throughout. It has been a packed few weeks, and the children have risen to every challenge with enthusiasm and spirit.

A reminder that we will be finishing the half term with a non-uniform day—a lovely way to celebrate all of the hard work that has taken place across the school.

We are also looking forward to our Community Forest volunteering day this Saturday. There will be opportunities for families to get involved in developing our outdoor spaces, alongside some crafts for the children to enjoy. We would love to see as many of you there as possible, continuing to build the strong sense of community that makes Cherry such a special place!

Forest working day

MAGIC FOREST VOLUNTEER DAY!

Would you like to help 'spruce up' Cherry Garden Primary's forest area to enhance the childrens learning and help nature thrive?

We are hosting a community volunteer day to make some changes in the Garden - no experience necessary, just come along.

All welcome!

Saturday 16th May
11am-2pm

FREE CAKE

Well done Year 6

WELL DONE, YEAR 6!

ON COMPLETING YOUR SATS THIS WEEK!

We are **SUPER PROUD** of your resilience, determination and positive attitude.

Year 6 have completed their SATs this week, and we are incredibly proud of each one of them. Their resilience, determination and positive attitude have truly shone through.

They approached every challenge with maturity and showed what it means to be the very best version of themselves. That is something far more important than any test score.

Year 6, you have all done amazingly well—now it's time to celebrate your hard work!

Year 6 SATs Breakfast



Exciting events for Year 6

Now that SATs are complete, we are looking forward to making the final weeks of primary school as memorable as possible for our Year 6 children.

Our residential camp will take place from **10th–12th June**—please refer to this week’s letter for full details. There will also be a **camp meeting for children and families on 18th May at 5.30pm**.

We are excited to celebrate the children’s journey at our **Year 6 Celebration Assembly on Friday 22nd May**, where they will be presented with their hoodies to wear in Term 6.

Term Dates 2026/27

Term 1	Thursday 3 September 2026	Friday 23 October 2026
Term 2	Monday 2 November 2026	Friday 18 December 2026
Term 3	Monday 4 January 2027	Friday 12 February 2027
Term 4	Monday 22 February 2027	Thursday 25 March 2027
Term 5	Monday 12 April 2027	Friday 28 May 2027
Term 6	Monday 7 June 2027	Friday 23 July 2027

Inset days:

September 3rd and 4th 2026

Summer term events

Please see below some of the dates of key events during the Summer term:

SATURDAY 16th May – Magic forest volunteer day

10th – 12th June – Year 6 camp

24th June – Sports day

(1st July reserve sports day)

10th July – Summer Fayre

21st July – Last day of term 6; Year 6 leavers assembly

Reception starters 2026

We are so excited to start welcoming our next cohort of children to Cherry Garden school. This week, letters to our new families have been emailed and transition paperwork will shortly be posted to home addresses.

If you or anyone you know has a child starting in September, please remind them of our pre-school sessions. Each session starts at 2.30pm and is led by our Early Years team.

Monday 18th May – Gymnastics in the hall

Thursday 11th June – Story time



Award Winners:

VIP Awards: Isla (Y3)

Teachers' and Reading Raffle Awards

Reception: Daisy & Frankie

Year 1: Robyn & Quinn

Year 2: Ivy & Jonah

Year 3: Thea & Thea

Year 4: Effie & Kiera

Year 5: Leo R & Macsen

Year 6: EVERYONE!

Eco Award: Reception



DIRECTORY

A huge thank you to all our directory sponsors whose generosity helps us to keep all of our clubs free for all children. If you have know of a company, that would like to advertise in the Directory, it costs only £5 per term.

THE WINDOW HUB.CO.UK

DOUBLE NFA25 AWARD WINNERS!

We're incredibly proud of our very own...

Adam Smith: Office Manager of the Year
Bradley Barber: Young Person of the Year

Both received national recognition in competitive categories at the 2022 National Foundation Awards, with tough competition from nominees across the UK. Their hard work, passion & dedication reflect everything The Window Hub stands for and we couldn't be happier to see their efforts recognised.

G25 BUSINESS FINALIST

The exclusive doesn't stop there as we're also one of the only companies short-listed in Bristol's Greenest Building, Government & Client for the G25 Awards 2022 (November - Watch us lead!)

Get in-touch today for a FREE no obligation quotation

0117 3134 862

Come visit our showroom

72-74 High Street, Staple Hill, Bristol BS16 5HN

info@thewindowhub.co.uk
www.thewindowhub.co.uk

Trustatol, TRUSTMARK, GRI, FENSA

Netball club



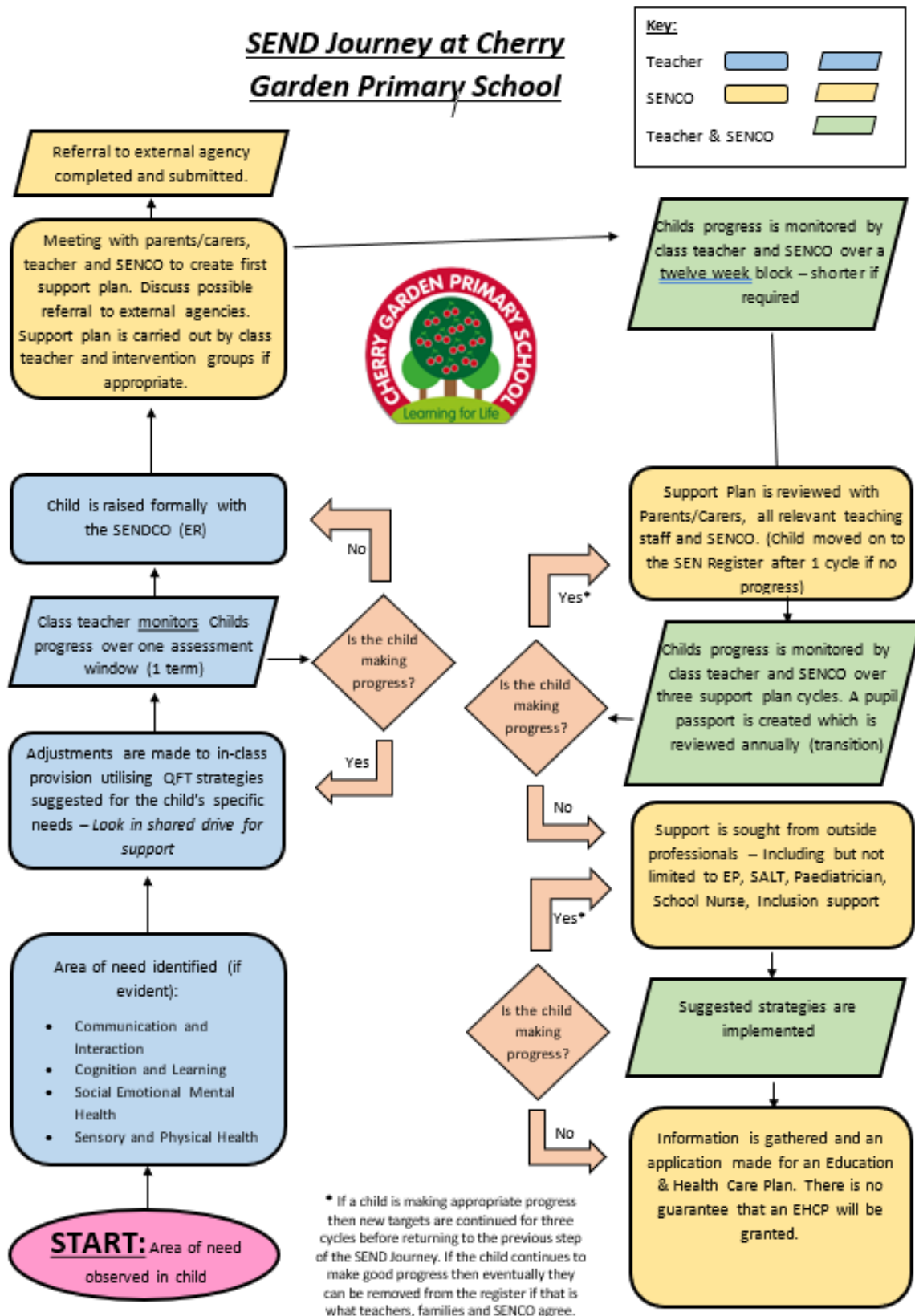
Dates For Your Diary

20.4.26	First day back-Gardening club begins
22.4.26	CSET sports coaching — Y5 and 6 and focus group (email information sent to families involved)
24.4.26	First enrichment for years 1, 2 and 3
28.4.26	CSET sports coaching
5.5.26	CSET sports coaching
7.5.26	Class photos
Week commencing 11.5.26	SATs week including SATs breakfast
SATURDAY 16 th MAY	Forest volunteer day
18.5.26	5.30pm Camp meeting
22.5.26	Y6 celebration assembly End of term 5

SEND at Cherry Garden

With increasing discussion in the media around SEND and inclusion in schools, we would like to take the opportunity over the coming weeks to share how we approach this at Cherry.

In this edition, we have included a guide to our SEND journey. This flow chart demonstrates how we support children with an emerging and developing SEN need.





Friday 22nd May 2026



Come to school in non-uniform

&

help us raise money for our lovely
school!

£1

Cash only!

(Please pass to the class
teacher)

Can't, not won't

Understanding what lies beneath school avoidance

SGPC and the South Glos Educational Psychology team have teamed up to create a series of video guides designed specifically for parent carers on the topic of emotionally based school avoidance (EBSA)

These videos will give information on EBSA, starting with the Psychology of EBSA including working with schools through to Recovery to Rediscovery.



watch the next videos in the series



Parent Wellbeing: Acceptance and Commitment Therapy



Emotion Coaching



meet the SGPC Peer Support team

**BOOK
NOW**

SCAN HERE



St Michael's Centre,
Stoke Gifford,
BS34 8PD

Wednesday 10 June
10:00 - 12:30



Online Workshops



Understanding & Supporting Anxiety
Thursday 7th May
7:00pm - 9:00pm



Understanding Demand Avoidance
Tuesday 9th June
7:00pm - 9:00pm



When Siblings Needs Clash
Tuesday 30th June
7:00pm - 9:00pm



We are happy to say that due to funding, we are able to provide our workshops free of charge.



Being a parent carer of a child or young person with SEND can bring extra situations which are challenging to know how to handle.

Our online workshops are here to empower you on your child's SEND journey.

- ✓ Confidence in understanding and meeting your child's needs.
- ✓ Ideas, effective strategies and signposting to other services.
- ✓ A chance to ask questions, as well as receive extra support if needed.

Your child does not need to have a diagnosis for you to access any of our support



 sgpc.org.uk

