



Silloth Primary School Newsletter
22.5.26

~ Creativity ~ Respect ~ Honesty ~ Safety ~ Achievement ~

Friday 22nd May

A message from Miss Mounsey...

As we reach the end of another busy and exciting half term, I would like to take a moment to reflect on all that has been achieved and to thank our wonderful children, staff and families for their continued support.

WOW – what a way to finish the half term! Sports Day and our Colour Run were a fantastic way to end on a high. Events like these create memories that our children will remember for a long time. A huge thank you goes to the Friends of Silloth Primary School for organising such a brilliant event and to everyone who kindly sponsored the children. We would also like to say a huge thank you to Silloth Co-op, who very generously donated water, fruit and ice lollies for all of the children after the event. This was such a thoughtful gesture and greatly appreciated by everyone.

Looking back over the half term, we have packed so much into just a few weeks! Year 4 enjoyed their residential experience, Year 6 approached their SATs week with determination and resilience, and we have also been delighted to welcome new starters into Nursery. Children across school have enjoyed electricity workshops, undertaken fieldwork in and around Silloth and, as always, produced lots of fantastic work to be proud of.

We are already looking forward to our final half term of the 2026–2027 academic year, which promises to be another busy and exciting one. We have a visit from RockSteady planned, who provide children with exciting opportunities to learn instruments, perform and experience being part of a band. We also have a theatre visit from M&M Productions, Year 6 residential and, of course, plenty of end-of-year treats and celebrations to look forward to.

As with every school year, there are also some changes ahead. We have recently said goodbye to Mrs Steele-Milburn from our Midday Supervision team as she begins her maternity leave. We are all incredibly excited to meet the newest addition to her family and send her our very best wishes. We will also be saying goodbye to Mr Thompson, our janitor of 10 years, as he begins his retirement. We thank him for his dedication and hard work over the years and wish him a long, happy and well-deserved retirement. We are pleased to welcome Mr Wise to the team, who joins us on Monday 1st June. Looking ahead to

September, we are also delighted to welcome Miss Rowe, who will be joining us as our new Year 6 teacher.

There are certainly very busy times ahead, and we are looking forward to making the most of every opportunity in our final half term together.

Have a wonderful half term break and we look forward to welcoming everyone back refreshed and ready for another exciting few weeks.



Dates for the Diary



Monday 1st June - Back to school!

Wednesday 3rd June - Nelson Thomlinson Transition Visit to Silloth Primary School

Wednesday 3rd June - Wear Your Wellies To School Day! (RNLI)

Monday 8th June - Friday 12th June - Year 1 Phonics Screening Check Week

Wednesday 17th June - Friday 19th June - Year 6 Manchester Residential

Monday 22nd June - Friday 26th June - Year 6 Health Action Week

Monday 29th June - Friday 3rd July - Year 6 - Solway Transition Week

Tuesday 7th July - SATs Results Day

Wednesday 8th July - KS2 Summer Show - Silloth Rocks! 1:30pm & 6pm

Friday 10th July - School Reports Out

Monday 13th July - School Open Afternoon - 2pm-5pm

Thursday 16th July - Year 6 Leavers' Assembly - 9am

Friday 17th July - School's Out For Summer - 1pm

Facebook & Class Dojo

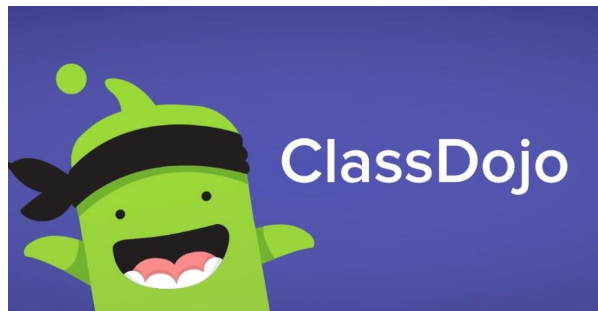
We are excited to share some changes to how we communicate and celebrate children's learning experiences in school.

*Our new Facebook page, **Silloth Primary School News**, will be used for whole-school updates, community information and useful resources for families, while **Class Dojo** will become our main platform for sharing photographs and updates about learning and classroom activities.*

Nursery–Year 2 families should already be connected, and Year 3–6 children should have brought home information explaining how to set up access.

Please remember that Class Dojo should not be used for reporting absences, urgent messages or concerns, which should continue to be directed through the school office.

Further information has been sent via ParentMail, and please contact school if you require any support setting up the app.



KS2 Summer Show 2026 - Silloth Rocks!

*We are excited to announce our **Key Stage Two Summer Show – Silloth Rocks!** 🎸 🎤*

*Join us on **Wednesday 8th July** for a fantastic celebration of rock music through the decades, performed by our talented Key Stage Two children.*

🕒 **Performance Times:**

- 1:30pm
 - 6:00pm
-

🎫 **Tickets:** £3 each (limited to 2 per family) and must be purchased via **ParentMail**. Tickets will be sent home with your children.

🎟️ **Raffle and refreshments** will be available at both performances.

★ All tickets purchased will also be entered into a **special prize draw** at the performances.

We look forward to seeing you there for what promises to be a brilliant show!



School Uniform and PE Kits

Just a quick reminder following the message sent before the Easter break regarding school uniform and PE kit.

Please see below for the guidance. We would appreciate your support in ensuring children come to school dressed appropriately each day, with PE kits in line with school requirements.

THANK
YOU

Uniform Expectations

- *Royal blue sweatshirt with embroidered school logo*
 - *White polo shirt (school logo optional)*
 - *Black or dark grey trousers, knee-length skirts , or smart school shorts for summer*
 - *Blue and white checked dresses may be worn in the summer*
 - *Plain, low heeled black school shoes must also be worn with socks at all times.*
 - ***No sandals are permitted***
 - ***No tracksuit bottoms are permitted***
 - ***Only black, low heeled boots may be worn in winter***
 - ***No training shoes are permitted (other than for PE)***
-
-

Jewellery

- *A watch may be worn. Smart watches are not permitted.*
 - *ONLY discreet stud earrings can be worn and on the grounds of safety the studs should have no sharp edges. All earrings must be removed (at home) during PE, games and swimming for health and safety reasons.*
 - *The wearing of other jewellery, rings, necklaces, bracelets etc. is not permitted in school for health and safety reasons*
 - *Pupils will be asked to remove any jewellery.*
-
-

Other

-
- *Long hair must be well tied back at all times. This applies to **girls and boys**.*
 - *Nail varnish and make-up is not permitted.*
 - *A waterproof coat must be brought to school every day.*
 - *Please ensure that all belongings are clearly labelled with your child's name.*
-



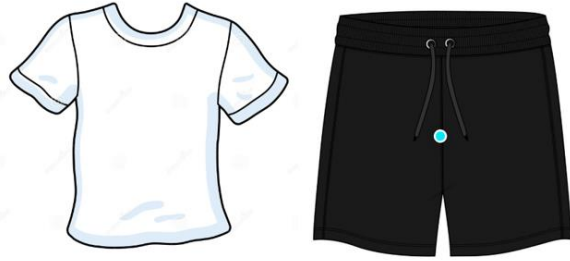
PE Kit Expectations

Please ensure that your child brings their PE kit into school every Monday and then it is in school for the week.

Our PE kit consists of a plain white t-shirt and black/navy shorts or jogging bottoms.

Nike Pro shorts are not permitted.

All earrings must be removed (at home) during PE, games and swimming for health and safety reasons.



Sports Day 2026


What a fantastic Sports Day we had! Children across school, including our Nursery children, had an amazing time taking part in races and activities, showing fantastic enthusiasm, determination and teamwork throughout the day.

We loved seeing so many smiles, children cheering each other on and everyone trying their very best. There was lots of encouragement, laughter and fun shared by all, making it such a special day for everyone involved.

*A huge congratulations to **Blue Team**, our overall Sports Day winners! 🏆 However, everyone is a winner in our eyes for showing such amazing effort, determination and team spirit throughout the day ☆*

A huge well done to all of our little superstars for taking part and making the day so memorable. Thank you to everyone for your support in helping make the event so enjoyable and successful.

*A special thank you also goes to **Silloth Co-op**, who very kindly donated water, fruit and ice lollies for all of our children to enjoy after the event. Your generosity was greatly appreciated and helped make the day even more special! 💖*

* Head over to **Class Dojo** to enjoy more photographs and relive all of the wonderful memories from our action-packed day!*











The Colour Run - 2026!

The Colour Run was once again a fantastic success and a brilliant way to round off our Sports Day celebrations!

The event brought so much excitement, with everyone embracing the spirit of the day and creating some wonderful memories along the way. It was lovely to see such enthusiasm and energy from all of the children as they took part.

A huge thank you goes to the Friends of Silloth Primary School for organising and running this fantastic event. We are incredibly grateful for all of the hard work, time and effort that goes into making opportunities like this possible for our children.

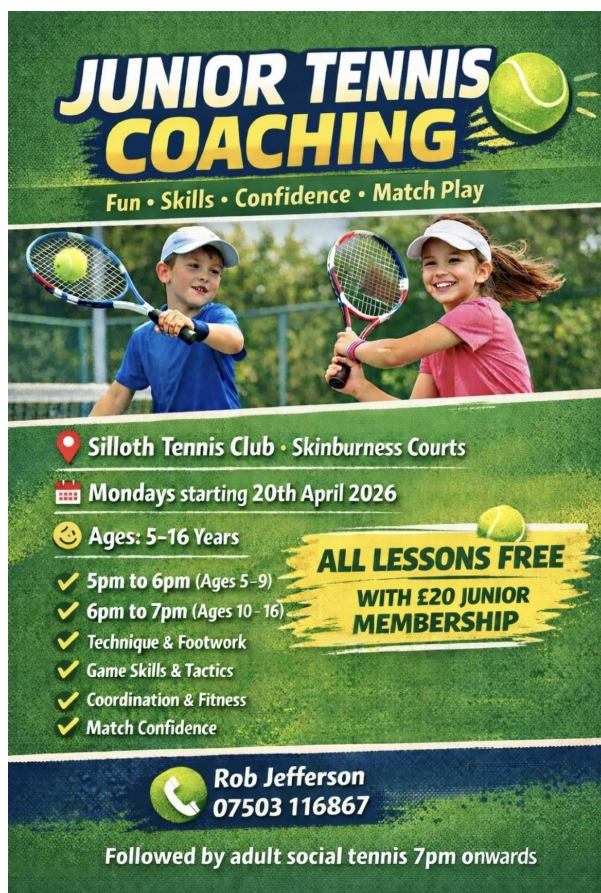
Thank you also to everyone who supported the event through sponsorship and encouragement – your support is greatly appreciated. The money is still coming in but, after the first count, we are well over £1,000! AMAZING!

More photos will be added to Class Dojo!

We think it's safe to say that everyone went home a little more colourful than they arrived...including me!



Silloth Tennis Lessons



JUNIOR TENNIS COACHING
Fun • Skills • Confidence • Match Play

Silloth Tennis Club • Skinburness Courts

Mondays starting 20th April 2026

Ages: 5-16 Years

ALL LESSONS FREE
WITH £20 JUNIOR MEMBERSHIP

- ✓ 5pm to 6pm (Ages 5-9)
- ✓ 6pm to 7pm (Ages 10-16)
- ✓ Technique & Footwork
- ✓ Game Skills & Tactics
- ✓ Coordination & Fitness
- ✓ Match Confidence

Rob Jefferson
07503 116867

Followed by adult social tennis 7pm onwards

Get Your Kids Involved in Cricket This Summer!

Looking for a fun, active way to keep your children entertained while building confidence, skills, and friendships? Check out the amazing youth cricket programmes from the England and Wales Cricket Board

***All Stars Cricket (Ages 5-8)**The perfect first step into cricket!*

-
- *8 weeks of non-stop fun, games, and skills*
 - *Make new friends in a safe, welcoming environment*
 - *Learn the basics of cricket through play*
 - *Every child receives a personalised t-shirt, bat, ball & backpack!*
-

Find your nearest club: <https://www.ecb.co.uk/play/all-stars>

***Dynamos Cricket (Ages 8–11)** Ready for the next level? Dynamos is ideal for kids progressing from All Stars—or trying cricket for the first time!*

- *Fun, fast-paced sessions with a social focus*
 - *Build confidence and develop key cricket skills*
 - *A great way to stay active and engaged*
 - *Includes a personalised Dynamos t-shirt with name & number!*
-

Find your nearest club: <https://www.ecb.co.uk/play/dynamos-cricket>



'Wear Your Wellies To School!'

Throughout May, the RNLI holds its annual national fundraising campaign to help support the incredible work they do saving lives at sea.

As a school community located by the coast, we recognise how important the RNLI is and the vital role they play in keeping people safe in and around our local waters.

*As May has been a particularly busy month in school, we are showing our support a little later by holding a 'Wear Your Wellies to School' day on **Wednesday 3rd June**.*

Children are invited to come to school wearing their wellies and make a **£1 donation**, with all money raised going directly to the RNLI.

We look forward to seeing everyone getting involved while supporting such an important cause.



Packed Lunches

At Silloth Primary School, we promote healthy eating to support children's growth, development, and concentration throughout the school day. To help with this, we kindly ask that all **packed lunches follow our healthy lunchbox guidelines**.

A healthy packed lunch should include:

- **A portion of starchy food** – such as bread, rolls, wraps, pasta, rice, couscous, or potatoes.
- **At least one portion of fruit and/or vegetables** – fresh, dried, tinned (in juice), or frozen.
- **A source of protein** – lean meat, fish, beans, pulses, hummus, or meat alternatives.
- **A dairy item** – like cheese, yogurt, or a milk-based dessert.

- *A healthy drink – preferably water, or milk/100% fruit juice in moderation.*
-
-

Please do not include:

- *Chocolate bars or confectionery.*
 - *Sweets.*
 - *Fizzy or energy drinks.*
 - *Nuts or nut products (we are a **nut-free school**).*
 - *Eggs or egg-based products (we are an **egg-free school**).*
 - *Hot food in flasks (due to health and safety concerns).*
-
-

To keep all children safe:

- ***Lunchboxes must be clearly labelled*** and may include a small ice pack, as we cannot refrigerate them.
 - *Children must **not share food** to avoid allergic reactions or cross-contamination.*
-
-

Special Diets:

We understand that some children may require special diets for medical, religious, or cultural reasons. Please inform school if this applies to your child, and we will support you in providing a healthy, balanced alternative.

Monitoring:

Packed lunches are monitored by staff. Healthy choices are praised, and we will always work sensitively with families to support improvements where needed.

Thank you for helping us keep lunchtime healthy and safe for everyone!



HEALTHY PACKED LUNCH POSTER
Eat Well • Feel Great • Learn Better!

Your Packed Lunch Should Include:

Starchy Food (1 Portion) Bread, wraps, rolls, pasta, rice, couscous, or potatoes.	Fruit & Vegetables (At Least 1 Portion) Fresh, dried, tinned or frozen.	Healthy Drink • Water is best! • Milk or 100% fruit juice.
Protein Lean meat, fish, beans, pulses, or hummus.	Dairy Cheese, yogurt, or milk dessert.	Healthy Drink • Water is best! • Milk or 100% fruit juice.

Please DO NOT Bring:

X Chocolate bars or sweets	X Fizzy or energy drinks	X Nuts or Nut Products Nut-Free School
X Nuts or Nut Products Nut-Free School	X Eggs or Egg Products Egg-Free School	X Hot Food in Flasks No Hot Food

Thank You For Helping Keep Our School Healthy & Safe!

Rainbows & Brownies



'We play loads of fun games, do activities and challenges and sometimes get badges'
Matilda

Rainbows
Silloth
Tuesday 6pm to 7pm

Girls play, learn and have tons of fun
for ages 4 to 7

At Rainbows, we welcome all girls to play, learn and have fun in a creative, safe space for all abilities.



Registered charity number: 306016

Join a local Rainbows group girlguiding.org.uk/joinus



'I had never climbed before. I was scared of heights. But I climbed and rang the bell all by myself and felt really proud of myself'
Poonam

Brownies
Silloth
Tuesday 6pm to 7pm

Girls have nonstop fun, learning and adventure
for ages 7 to 10

At Brownies, we welcome all girls to explore their creative side, get out into the great outdoors and start to learn to look after themselves, others and the world we live in.



Registered charity number: 306016

Join a local Brownies group girlguiding.org.uk/joinus

Nursery and Reception Places Available for September 2026!

*We are delighted to share that we currently have places available for **Nursery and Reception** for September 2026.*

*We would love to welcome families to our **Open Morning on Tuesday 30th June from 9:15am–10:15am**, where you can meet our friendly staff and see our lovely learning environments both indoors and outdoors.*

If you are unable to attend, we are always happy to arrange individual visits. Please contact the school office for more information or to book a tour—we look forward to welcoming you to our school community.



Silloth Primary School
'Where Children Come First!'
SILLOTH PRIMARY SCHOOL
2026/2027

Is your child looking to start
Nursery in September 2026?

Is your child looking to start
Reception in September
2026?

We have places available!

We can offer individual appointments for
parents to come and see for yourselves what
makes our school so special.

Visit our website for more
information
www.silloth.cumbria.sch.uk

Contact us on 016973 31243 or
admin@silloth.cumbria.sch.uk for more
information or to make an appointment.



Water Bottles & Fruit - PLEASE READ VERY CAREFULLY



Nursery - Just a reminder that all children get fresh water, milk and fruit daily. Therefore children do not need to bring water in their own bottles. ***No juice/water should be brought into school.***

Reception & Key Stage 1 - Children are to bring **empty water bottles** into school each day and fill them up in school from our water dispensers. It is very important that this is followed for safeguarding reasons. **No juice or water should be brought into school. If there are medical reasons why your child cannot drink water, please speak to Miss Mounsey regarding this.** Also, children get fruit daily and, therefore, there is no need to fetch snack.

Key Stage 2 - Children are to bring **empty water bottles** into school each day and fill them up in school from our water dispensers. It is very important that this is followed for safeguarding reasons. **No juice or water should be brought into school. If there are medical reasons why your child cannot drink water, please speak to Miss Mounsey regarding this.** Children can bring a piece of fruit into school for the morning breaktime. Please ensure that grapes are cut in half, lengthways.

Eco-Champions - Year 1 & Year 2!

This week's Eco-Champions of the Week are Year 1 & Year 2!

Well done for showing excellent eco-friendly habits and leading the way for others. Keep it up!



Parking on School Lane and in the school carpark

*We kindly ask that parents and carers **do not park on School Lane or on the school carpark** during drop-off and pick-up times.*

To help keep everyone safe, please **park on Skinburness Road, by the tennis courts**, and walk down to school with your child. This keeps the lane clear for residents, delivery drivers, and emergency vehicles, and ensures a safe environment for our children walking and cycling to school.

Thank you for your understanding and support in keeping our school community safe and considerate.



Silloth Share & Support



Need support?
email us on...
silloth_hub@yahoo.com

Silloth Share & Support

Your Community Food Hub
We are open to **everyone** living in the CA7 area.

 Christ Church,
Criffel Street,
Silloth

 3rd Wednesday
of every month
12- 2:30PM

Buy food at low prices

- We're asking for £5 donation per bag
- No appointment or referral needed
- If you are unable to pay, you won't be turned away

Join us for **tea, cake** and a **welcoming space**.
& support and advice!



Upcoming dates:

15th April
20th May
17th June
15th July
19th August
16th Sept
21st Oct
18th Nov
16th Dec

Chance Camp



CHANCE CAMP Keep your child Active, Confident, Smiling & Healthy in 2026
WWW.CHANCECAMP.CO.UH

DATES

INVASION GAMES	17 th Feb - 19 th Feb
MULTI SPORTS	30 th March - 2 nd April
	21 st July - 24 th July
OLYMPICS (Individual)	27 th July - 31 st July
OLYMPICS (Team)	3 rd Aug - 7 th Aug
STRIKING & FIELDING	10 th Aug - 12 th Aug
INVASION SPORTS	17 th Aug - 19 th Aug

 **SCAN TO BOOK**
Ages 4 - 14. DBS checked & fully qualified coaches

FLEXIBLE BOOKING SYSTEM IN PLACE

Attendance Champions - Year 3!

A huge well done to Year 3 who won the attendance award this week!

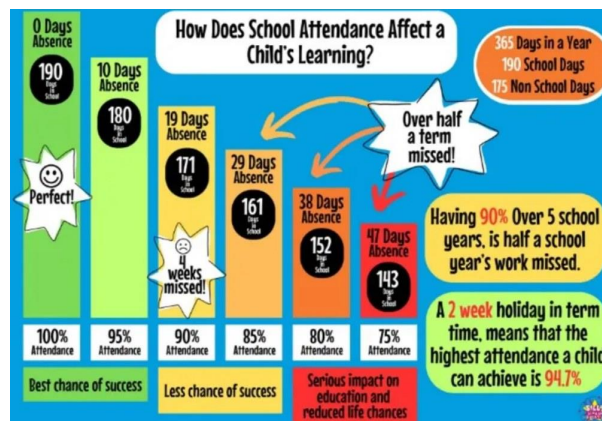
Here are the representatives collecting their certificate.

Great attendance means great learning — keep it up everyone!

This half term, Year 3 and Year 4 won the attendance table this half term and will receive their treat after the half term break!



Attendance Reminders...



PENALTY NOTICE FINES FOR SCHOOL ATTENDANCE IS CHANGING

1 FIRST OFFENCE

The first time a Penalty Notice is issued for Term Time Leave or Irregular Attendance the amount will be:
£160 per parent per child if paid within 28 days. Reduced to £80 per parent per child if paid within 21 days

The changes to Penalty Notice Fines will come into force for those issued after **19th August 2024**

2 SECOND OFFENCE (WITHIN 3 YEARS)

The second time a Penalty Notice is issued for Term Time Leave or Irregular Attendance the amount will be:
£160 per parent per child to be paid within 28 days. No reduced rate will be offered

The changes to Penalty Notice Fines will come into force for those issued after **19th August 2024**

3 THIRD OFFENCE AND ANY FURTHER OFFENCES (WITHIN 3 YEARS)

The third time an offence is committed for Term Time Leave or Irregular Attendance a Penalty Notice will not be issued and the case will be presented straight to the Magistrates' Court.
 Magistrates' fines can be up to £2500 per parent per child. Cases found guilty in Magistrates' Court can show on a parent's future DBS certificate, due to failure to safeguard a child's education.

10 SESSIONS (5 DAYS) OF UNAUTHORISED ABSENCE IN A 10-WEEK PERIOD

Penalty Notice Fines will be considered when there has been 10 sessions of unauthorised absence in a 10-week period

Ref: DfE Working Together to Improve School Attendance document

Punctuality Matters

*It is essential that children are in school **on time, every day.***

- **Doors open: 8:30am**
 - **Registration begins: 8:35am**
 - **Registration closes: 8:45am**
-

*After this time, children must enter through the **main entrance** and will be marked as **late**. Persistent lateness not only disrupts your child's learning but also affects the whole class. Patterns of lateness are carefully monitored and reviewed half-termly alongside attendance.*

Please support your child by ensuring they arrive on time and ready to learn. A prompt start helps them settle quickly, feel confident, and make the very best of every school day.

Punctuality Matters

*It is essential that children are in school **on time, every day.***

- ***Doors open: 8:30am***
 - ***Registration begins: 8:35am***
 - ***Registration closes: 8:45am***
-

*After this time, children must enter through the **main entrance** and will be marked as **late.***

Persistent lateness not only disrupts your child's learning but also affects the whole class. Patterns of lateness are carefully monitored and reviewed half-termly alongside attendance.

Poor attendance or frequent lateness can significantly affect life chances. Missing even a few days each term quickly adds up to large gaps in learning, making it harder for your child to keep up. Arriving late has the same impact — children miss vital teaching and the start of the school day, which sets the tone for learning.

Please support your child by ensuring they arrive on time and ready to learn. A prompt start helps them settle quickly, feel confident, and make the very best of every school day.



NHS Virtual Clinics

Self Esteem Low Mood Bullying Behaviour Toileting Sleep

Virtual Clinics for children aged 5-11 Years

NHS Harrogate and District NHS Foundation Trust

Emotional Health & Resilience Clinic

Ring or email to book a consultation on 0300 304 9029 hdfd.spoc@19cumberland@nhs.net

School Nurse Clinic

We can help your child feel heard, build resilience, and grow with confidence if they are struggling emotionally.

We're here to help with any concerns about your child's sleep, toileting, diet, or development – supporting them to grow feeling comfortable, confident, and happy.




Anger Anxiety Worry Diet Development

Cycling & Scootering to School – A Reminder about Road Safety

*As we are encouraging more children are choosing to cycle or scooter to school, we would like to remind families about the importance of **road safety** and being considerate of others. Please take a moment to talk with your child about safe cycling and scootering so that every journey to and from school is as safe as possible.*

Key Road Safety Rules for Cyclists

- Always wear a properly fitted helmet.
- Ensure bikes are roadworthy with working brakes and lights.
- Use cycle paths where available and keep to the **left-hand side** of the road.
- Look carefully before turning or crossing a junction and signal clearly with hand signals.
 - Obey traffic lights, road signs, and crossings.
 - Stay visible by wearing **bright or reflective clothing**.
- Never cycle more than two abreast, and ride in single file on narrow or busy roads.

-  Avoid distractions such as headphones or mobile phones.
 -  Do not ride on pavements unless a shared cycle path is clearly marked.
 -  Be cautious around parked cars – check carefully before moving out into the road.
-
-

On the School Grounds

For the safety of **all children, staff, and visitors**, riding bikes or scooters is **not permitted on school premises**. We kindly ask that children **dismount and walk** with their bikes or scooters once they enter the school gates.

Thank you for your continued support in helping us keep our school community safe.



Stars of the Week!

A huge well done to all of our Stars of the Week! Each of these children has shone brightly, showing great effort, kindness, and enthusiasm in their learning and around school. We are so proud of the positive attitudes they bring to school every day – keep up the fantastic work!



School Meals

School meals are £2.90p per day (£14.50 per week), which represents very good value for money.

All food is freshly made & prepared each day on site by our own kitchen team.

Please remember to pay your child's dinner money (Nursery & Year 3 – 6 ONLY) using +Pay.

Main Meal Choices W/C 1.6.26

Monday - Pork Meatballs & Gravy with Pasta

Tuesday - Chicken Korma with Rice

Wednesday - Pork Sausages, Mash Potatoes, Yorkshire Pudding, Vegetable & Gravy

Thursday – Cheese & Tomato Pizza & Potato Wedges

Friday – Breaded Fish & Chips

Nut & Egg Free School

Please remember that we are a nut & egg free school.

Your child may not bring any eggs or nuts into school as part of their packed lunches or as snacks. Breakfast bars for break time snacks are not permitted as they usually contain nuts or have been made in factories where there are nuts.



New Menu - Coming Soon!



Times Table Rockstars of the Week!

A huge congratulations to our amazing mathematicians who rocked their times tables this week!

These awards go to the children who, on average, spent the most time per day practising their times tables — your dedication and effort really paid off!

Let's see who will top the leader board next half term... keep practising, Rockstars!



Names in clothes, please!

Names in Clothes, Please!



Jumpers, cardigans and coats love to go on little adventures around school – but sometimes they forget where they belong!



To help them find their way back, please make sure your child's name is written clearly in *every* item of clothing, including PE kits, hats and shoes.



It makes life much easier for everyone and helps lost clothes get back home safely. Thank you for your help!

Be Ready For The Weather!

*As the weather is becoming increasingly unpredictable, please ensure that children bring a **coat to school every day**. We aim to get outside in the fresh air as much as possible, even if it's a little chilly or damp, so having a suitable coat means your child can enjoy playtimes and outdoor learning comfortably.*

Don't Forget Your Coat!

Bring a coat to school every day.



Living Streets' WOW - The Walk To School Challenge - Starts on Monday!

Living Streets' WOW – the walk to school challenge is back to help encourage as many children as possible to experience the benefits of walking and wheeling to school.

As you know, WOW is a pupil-led initiative where children self-report how they get to school every day. If they travel actively (walk/wheel, cycle, scoot or Park and Stride) at least twice a week for a month, they get rewarded with a badge. This is for Year 1-Year 6 children... but everyone can get involved! It's that easy!

What are the benefits of walking to school?

- *Children feel happier and healthier*
- *They arrive to school refreshed and ready to learn*
- *Helps reduce congestion and pollution at the school gates*

What if we can't walk to school?

If driving, 'Park and Stride' to help your child earn their WOW badges. Park at least ten minutes away from the school and walk the remaining journey.

If using public transport, hop off at least ten minutes away and walk the rest (recorded as 'other' on the WOW Travel Tracker).

What is a WOW badge?

There are 11 badges to be earned from September 2025 – July 2026. Each badge has been designed by a pupil as part of our annual WOW Badge Design Competition. A new badge can be earned every month if pupils walk/wheel, cycle, scoot or Park and Stride at least twice a week.

WOW 2025/26 encourages pupils to Walk with Joy, with badges depicting everything from jumping in puddles to painting.

The badges are made in Cornwall from material that was otherwise destined for landfill, including fridge trays, plastic plates and yoghurt pot off-cuts. For more information, visit:

livingstreets.org.uk/recycling

Last year, around 2,100 schools and over 540,000 pupils enjoyed the benefits of walking to school with WOW. Will you join us?

If you have any questions about the programme, please find more information and useful videos at: livingstreets.org.uk/wowlaunch



Smoking & Vaping

A gentle reminder to all parents and carers: smoking and vaping are strictly prohibited on school premises at all times. This policy is in place to ensure a safe, healthy environment for all our children, staff, and visitors. Please refrain from smoking or vaping anywhere on school grounds, including car parks and entrances. Your support helps us maintain a clean, respectful space where all children can thrive. Thank you for helping us keep our school a smoke-free zone.



Our Mission Statement

Nurturing, empowering and supporting the 'whole child' today, to flourish into successful, happy and resilient lifelong learners who positively contribute to the global community of tomorrow.

Our Vision

At Silloth Primary School we are committed to nurturing every child's potential in a supportive, safe and inclusive environment.

We aim to cultivate curious, compassionate, and confident learners who are equipped to thrive in a modern global community,

We embrace diversity, encourage critical thinking, creativity and foster a lifelong love of learning.

By integrating innovative teaching practices with a focus on empathy and global awareness, we aim to prepare our students to become responsible, resilient and active citizens of the world.

Together we empower our children to make a positive impact on their communities and beyond.

Contact Us

If you have any further questions or queries, please do not hesitate to contact us.

Silloth Primary School

Liddell Street,

Silloth,

Wigton,

Cumbria, CA7 4DR

016973 31243

admin@silloth.cumbria.sch.uk

Visit us on the web at www.silloth.cumbria.sch.uk or visit our [Facebook!](#)

