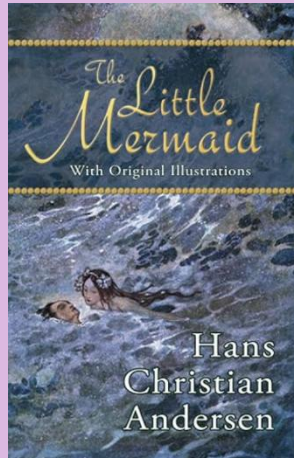
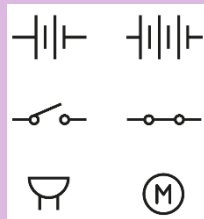


Year 6 Spring 2



February – March 2026

Science

Energy: Circuits, batteries and switches

Children will describe the function of key electrical components and predict if an electrical circuit will work or not, explaining why, using their knowledge of complete loops, power sources and presence of components. They will identify that batteries are a voltage source, build electrical circuits and work scientifically in their lessons.

In **English**, we will be basing our Reading and Writing lessons on the classic story of *The Little Mermaid*, by Hans Christian Andersen. We will explore how a writer creates a setting; children will write in the style of an author, identify and use adverbials and develop their cohesion. We will continue to have daily Writing lessons and four Reading lessons each week throughout this half-term, alongside weekly Grammar lessons. Revision lessons for SATs will also begin.

Our PE lessons will be:

Tennis and Gymnastics.

The children will have their PE lessons on Wednesdays and Thursdays.

Our key Maths learning:

- Percentages
- Area
- Perimeter
- Volume
- Line graphs
- Pie charts
- Calculating the mean

Computing

In our weekly Computing lesson, the children will learn about:

Spreadsheets, using Excel and Google sheets.

They will look at how a database can be used to organise data, as well as order and answer questions about data. Later in the unit, the children will create graphs and charts from their data to help solve problems.

Geography: Where does our energy come from?

In our Geography lessons, children will describe the significance of energy, giving examples of sources of energy and their trading routes. They will define renewable and non-renewable energy. We will discuss the benefits and drawbacks of different energy sources, the significance of the Prime Meridian and identify human features on a digital map.

Children will locate UK cities on a map and use six-figure grid references to identify features on an OS map.

In PSHE, our MyHappyMind sessions will focus on the 'Relate' module. Children will focus on the importance of active listening and how it helps to build strong relationships and understand other people's feelings. Children will learn how to help themselves feel good and do good. They will learn how Goal Setting helps to achieve more.

We will visit the Library every Friday afternoon.



Helpful links to explore at home:

Science: [Circuits, batteries and switches](#)

Geography: [Energy](#)

Maths: [My Maths](#) and [IT Rockstars](#)

Grammar: [English](#)