

Our Lady of Perpetual Help Catholic Primary School
Newsletter
20th March 2026

Weekly Attendance Figures

Congratulations to St Nicholas' Class who had **97.4%** attendance week ending 13th March.

Our overall attendance was **95.4%**

Most improved attendance is St Matthew's Class from **90%** to **95.5%**

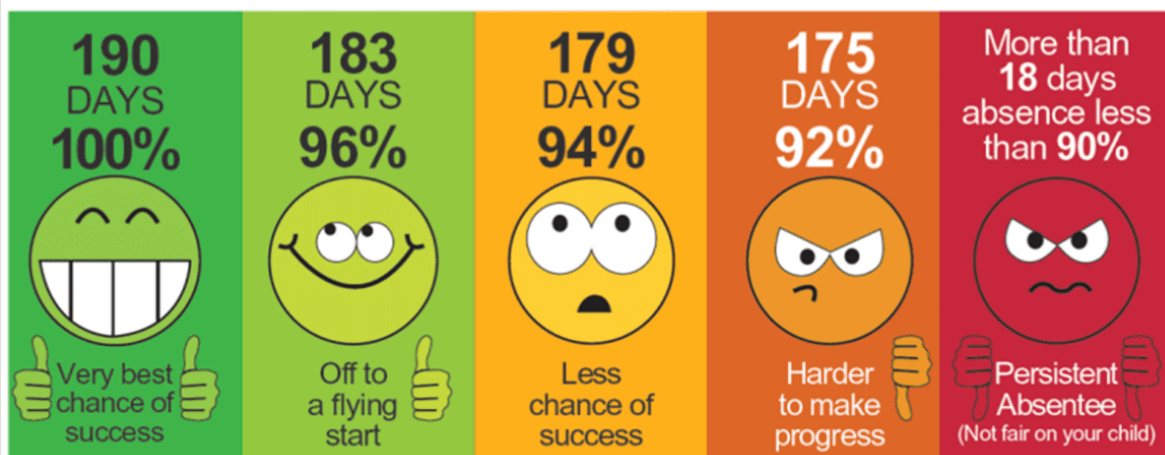
Congratulations to St Luke's Class who had **100%** attendance week ending 20th March.

Our overall attendance was **97.5%**

Most improved attendance is St John's Class from **92.3%** to **97.7%**

Class	Class Attendance For the week ending: 13/03/26	No. of lates	Class	Class Attendance For the week ending: 20/03/26	No. of lates
St Nicholas	97.4%	0	St Nicholas	96.3%	0
St Matthew	95.5%	2	St Matthew	95.2%	6
St Mark	97.4%	2	St Mark	97%	3
St Luke	95.2%	3	St Luke	100%	6
St John	92.3%	1	St John	97.7%	1
Winner	St Nicholas'		Winner	St Luke's	

There are **190** days in a school year which leaves **175** days to spend on family time, shopping, appointments and other things.



St Mark's Class Mass

On Tuesday 10th March, parents were warmly invited to attend St Mark's Class Mass, and it was wonderful to see so many of you join us for this special celebration. We would like to express our heartfelt thanks to all the parents who were able to be there and support the children. A special thank you also goes to Father Emmanuel for leading the Mass so beautifully, and to our dedicated Chaplaincy Team for their excellent contribution to the readings. Your support and involvement truly enrich our school community.



Achievers - Week ending 13th March

	Following in the footprints of Christ award	Dojo Star	Reader	Headteacher award
St Nicholas (Foundation Stage)	Zoey	Deity	Zain	Bella
St Matthew	Deborah	Denis	Tehillah	Edward
St Mark	Dominic S	Roscoe	Dylan	Logan
St Luke	Victoria	Faith	Cash	Jack
St John	Adesola	Calista	Allissia	Lily



Collective Worship

On Monday 9th March, we welcomed parents into school to take part in our Collective Worship. We would like to thank all the parents who joined us for this special session—it was wonderful to share this time together.



Family Reading Sessions

On Tuesday 10th March and Tuesday 17th March, we continued our Family Reading Sessions with St Nicholas' Class, St Luke's and St John's Class. Thank you to everyone for your continued support—it's wonderful to see the children spending quality time reading and sharing their love of books with their parents and carers. These sessions truly help to nurture a positive reading culture across our school, and we are grateful for the enthusiasm and commitment shown by all involved. We look forward to seeing you at our next reading sessions in the summer term.



Care for Creation Litter Pick

On Tuesday 10th March, our Care for Creation team took part in a litter pick at Bentley Park. The children did an amazing job at keeping the local area litter free. They also made their own bird feeders which they hung around the school grounds to help feed the wildlife.



Easter Egg Raffle

This week's Easter egg raffle winners are: Ade, Lunar, Deacon, Fabian, Adebola, Reuben, Amber, Orlaith, Charlotte, Gracie, Adam, Emilia, Calista, Lily, Maria, Wynter, Ola, Willow, Aria, James and Elijah.

Thank you to everyone who have bought tickets so far. You have raised £143 towards the cost of the coach for the cinema trip.

We will be selling the second round of raffle tickets on the playground next week. The raffle will then be drawn on Friday 27th March.



Easter competition

We would like to invite the children at Our Lady's to participate in our Easter competition. We would like children to make a model using decorated boiled eggs to mark the start of the season of Easter.

This will be set as their homework on Friday 27th March for them to complete over the Easter break.

Models can be any theme in order for children to be as creative as they would like.

To be in with a chance of winning, entries should be brought into school by **Wednesday 15th April**. There will be one winner per class.



Please hand entries to your child's class teacher once completed.

Boston Park Farm

On Friday 20th March, St Nicholas' class enjoyed a wonderful trip to Boston Park Farm to enhance their current learning. The children took part in a range of exciting activities, including craft sessions, a guided walk around the farm with an animal-handling experience, and a fun tractor trailer ride. Their behaviour throughout the day was excellent, and they all had an amazing time exploring and learning in such a hands-on environment. We would like to extend a heartfelt thank you to all the parent volunteers who supported the trip—your help made this valuable experience possible.



OLPH Building Fund

As a voluntary aided school, we have to pay 10% towards any capital building improvements to our school. To help towards these costs we ask for a contribution of £30.00 per family per academic year. In recent years this fundraising has supported the building of our beautiful new library and the replacement of the Foundation Unit floor. Your contribution can be paid as a one-off payment of £30.00 on ParentPay or in smaller instalments. We really hope you can support us by making a contribution from your family to help us maintain the very best learning environment for our children.



After School Clubs - Summer term 1

Please see the table below for the after-school clubs.



After School Clubs	Year Groups
Monday - Invasion Games (begins 13 th April)	Reception, Year 1 and 2
Tuesday - Football (begins 14 th April)	Years 3,4,5 & 6
Wednesday - Cricket (begins 15 th April)	Mixed age group - Reception - Year 6

School Uniform Reminder

We believe that school uniform gives pupils a sense of pride and belonging within our school community. It also makes children feel equal to one another in terms of appearance. Please see below a list of our school uniform.

Girls

Grey or Black trousers/ skirt/
pinafore dress
Summer red gingham dress
White blouse/polo shirt
Red cardigan/ sweatshirt
Black
shoes/ black trainers

Boys

Grey or black
trousers/shorts
White shirt/polo shirt
Red Sweatshirt/jumper
Black shoes/ black
trainers



Jewellery, make up and nails

Please note that jewellery is not permitted to be worn in school with the exception of a small pair of plain, studded earrings and a watch. Earrings must be removed before PE - we do not permit plasters to be worn over earrings during PE.

Children are not permitted to wear make up to school unless there is an agreed non-uniform or dress up day.

Please be reminded that, in line with our health and safety requirements, students are not permitted to wear false or acrylic nails while at school. These nails can pose safety risks during practical lessons, physical activities, and everyday school routines, and may also make it difficult to maintain proper hygiene. Children will not be permitted to participate in PE lessons, break times outside or physical activities until nails are removed. To ensure a safe learning environment for all students, we ask that nails remain natural, clean, free from nail varnish and of an appropriate length.



PE days

Each class has two PE sessions per week, one in the morning and one in the afternoon.

For morning sessions, children should come to school dressed in their PE kit, but must also bring their school uniform to change into afterwards.

For afternoon sessions, children should arrive in their school uniform, and bring their PE kit with them to change into before the lesson.

If a child forgets their PE kit, they will be provided with a spare kit from school to ensure they can still take part.

Thank you for your support in helping us keep PE running smoothly!



Please see below the relevant PE days for each class.

Day of the week	Morning	Afternoon
Monday	Foundation Stage St John's Class	St Luke' Class
Wednesday	N/A	St Matthew's Class St Mark's
Thursday	St Matthew's class St Mark's Class	St John's Class
Friday	St Luke' Class	Foundation Stage

PE Kit

Black/navy PE shorts or tracksuit bottoms

Plain white T-shirt/polo shirt

Plain black/navy sweatshirt/tracksuit jacket

Trainers/ pumps

No logos of any type



Diary Dates

Event	Date
St Matthew & St Mark's Lenten Assembly	Monday 23 rd March - 2.45pm
St Luke's and St John's Lenten Assembly	Tuesday 24 th March - 2.45pm
Break up for Easter Holidays	Friday 27 th March - 3.30pm
Return to School	Monday 13 th April
Parents invited to non-core lessons	Tuesday 14 th April - 2.15pm
Foundation Stage Stay and Play	Tuesday 14 th April - 2.15pm
Easter Egg Competition Judging	Wednesday 15 th April
Dojo Cinema Trip	Thursday 16 th April
St Matthew's Trip - Danum Museum	Tuesday 28 th April

Our Virtue to Live by:

Forgiveness

I accept God's forgiveness.

I show my love for God by forgiving others and myself.

I let go of my hurt feelings and give myself a new start.

I give others a new start.

"Forgive as the Lord forgave you." (Colossians 3:13)

OLPH 2025/26 Academic Year - School Holidays

School opens	School closes at the end of the school day
Tuesday 2 nd September 2025	Thursday 23 rd October 2025
Monday 1st September 2025 - Training Day	Friday 24th October 2025 - Training Day
Monday 3 rd November 2025	Friday 19 th December 2025
Tuesday 6 th January 2026	Friday 13 th February 2026
Monday 5th January 2026 - Training Day	
Tuesday 24 th February 2026	Friday 27 th March 2026
Monday 23rd February 2026 - Training Day	
Monday 13 th April 2026	Friday 22 nd May 2026
Monday 4th May 2026 - Bank Holiday	
Monday 1 st June 2026	Friday 17 th July 2026
	Monday 20th July 2026 - Training Day

All dates in red the school will be closed to students

Bank holidays:	Training Days:
Monday 4 th May 2026	Monday 1st September 2025 Friday 24 th October 2025 Monday 5 th January 2026 Monday 23 rd February 2026 Monday 20 th July 2026

OLPH 2026/27 Academic Year - School Holidays

School opens	School closes at the end of the school day
Wednesday 2 nd September 2026	Friday 23 rd October 2026
Tuesday 1st September - Training Day	Friday 2nd October - Training Day
Monday 2 nd November 2026	Friday 18 th December 2026
Monday 4 th January 2027	Friday 12 th February 2027
Monday 22 nd February 2027	Thursday 25 th March 2027
	Friday 26th March - Bank Holiday
Monday 12 th April 2027	Friday 28 th May 2027
Monday 3 rd May 2027 - Bank Holiday	
Monday 7 th June 2027	Friday 16 th July 2027
Monday 19th July - Training Day	Tuesday 20th July - Training Day
Wednesday 21st July - Training Day	

All dates in red the school will be closed to students

Bank holidays:	Training Days:
Friday 26 th March 2027 Monday 3 rd May 2027	Tuesday 1 st September 2026 Friday 2 nd October 2026 Monday 19 th July 2027 Tuesday 20 th July 2027 Wednesday 21 st July 2027