

Welcome to this week's newsletter.

GROW Assembly Focus: "World Day for Cultural Diversity"

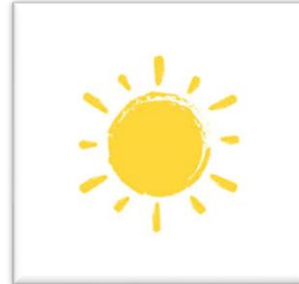
Congratulations to ALL our Wonderful Workers of the Week





Welcome back to the start of Summer 2

We hope that you all had a lovely holiday and made the most of the lovely weather. To our families who celebrated, we hope that you had a wonderful Eid Al Adha.



Team MeritPoints - Remember children who are workers of the week now gain 150 team merit points each for their charity.



Our current overall leading team is wildlife Trusts with 112,925 and this week's winning team is Marine Conservation Society with 3,790 points. Well done !



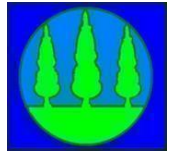
ATTENDANCE

Week ending -21/05/2026

Well done to all the classes mentioned below- you all managed to beat 96.2% A great achievement! Moving around the Attendance-opoly Board, if a class lands on a 'Surprise Mission,' they are able to vote and decide on a free dress day instead. This is organised by the class teacher.

Week ending: 21/05/2026

The whole school attendance for this week is:	94.05%
The whole school attendance for the school year is:	93.46%
The Phase 3 winners are:	Beech with 98%
The classes who are above 96.2% are:	Unfortunately, there are no other classes
The Phase 1 winners are:	N/A
The classes who are above 96.2% are:	Unfortunately, there are no other classes
The Phase 2 winners are:	Oak with 96.67%
The classes who are above 96.2% are:	Sycamore with 96.64%



Please consider the impact of taking holidays during schooltime. This is having the **greatest negative impact** on attendance and of course, your child's education. It is highly likely that you will receive a fine.

Recently we have had a significant increase in the number **of children arriving late into school.**

The "Hidden" Impacts of Lateness

- **Missed Learning & Routine:** Children miss morning announcements, registration, and crucial instructions for the day, which can make them feel confused or anxious.
- **Social & Emotional Cost:** Arriving late can be embarrassing and makes it difficult for a student to settle, often disrupting the rest of the class.
- **Habit Formation:** Consistent lateness creates bad habits that are difficult to break, which can negatively affect future employment.
- **Academic Achievement:** There is a direct link between good attendance/punctuality and high attainment; a student with 90% attendance is deemed a "persistent absentee" and is less likely to reach expected standards.
- **Reduced Confidence:** Students who are regularly late may feel insecure, making them less willing to participate in school activities.

Long-Term Consequences

- **Reduced Performance:** Frequent lateness often leads to falling behind in work and lower scores in exams.
- **Lower Employment Prospects:** Poor punctuality sets a poor precedent, which can translate to difficulties in future employment.
- **Increased Risk of Leaving Education Early:** Without intervention, consistent tardiness is linked to lower academic achievement and a higher risk of dropping out.

Impact on Lost Learning Time (Per Year)

- **5 minutes late every day:** Over 3 days of school lost per year (lessons).
- **10 minutes late every day:** Over 6.5 days of school lost per year.
- **15 minutes late every day:** Equivalent to 2 weeks (10 days) of school lost per year.
- **30 minutes late every day:** Equivalent to 19 days (nearly 4 weeks) of school lost per year

Kids With Bricks After School Club at Poplars Farm Primary School

Dear Parents/Carers,

Kids With Bricks After School Club at Poplars Farm Primary School

We are pleased to be able to offer our Kids With Bricks after school club running from 3:20 - 4:15 every Monday for 6 weeks from 8th June 2026. This club is open for Reception-Year 4 and there are a maximum of 19 places available. The club is organised, administered and supported by Kids With Bricks Ltd, an external provider who deliver after school clubs across the whole of the UK.

As well as completing a range of exciting educational challenges, students will have the chance to work both individually and to work in teams.

As an added bit of fun, students from the club will also take part in a weekly inter-school competition where parents can vote for their favourites and points are won for national leader board.

BOOK ONLINE!

The club costs £3.50 + VAT per child per session and is paid for termly in advance. All club places are reserved and paid for online. Just go to www.kidswithbricks.com to book your child's place.

* Ticket sales are now live online

Any problems please contact us on bookings@kidswithbricks.com



Together we aspire, learn and GROW

Community

Picnic



Saturday 13th

June, 2026

11am- 2pm



At

Poplars Farm Primary school

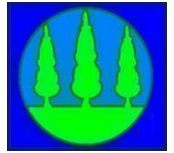
Let's unite our community through a shared picnic! All the family are welcome.

- Traditional fashion Show
- Bouncy castle
- Face painting
- Stalls (can be hired for £10)

And more...

Year 5 Yorkshire Showground Trip – 19 May 2026





DIARY

Important forthcoming dates



Friday 22 May 2026 - School closes for Summer Half Term

Wednesday 3 June 2026 – School reopens

Thursday 11 June 2026 – Reception Eye Vision Test

Saturday 13 June 2026 – Poplars Community Picnic Event- more information is provided in this Newsletter (don't forget to let the office know if you would like to have a stall (£10) at the event.

Wednesday 17 June 2026 – Whole School Road Safety Lessons

17 -22 June 2026 – Book Fair

Wednesday 24 June 2026 – Year 3 Road Safety Practical Lessons

Thursday 25 June 2026- Year 4 St George's Trip- The Halle School Trip

WC 29 June 2026 – Bikeability Week

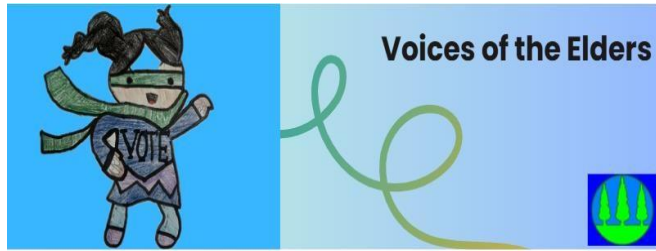
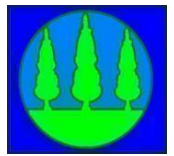
Wednesday 1 July 2026 - Choir and Dance Concert

Wednesday 1 July 2026 – Year 5 STEM Festival

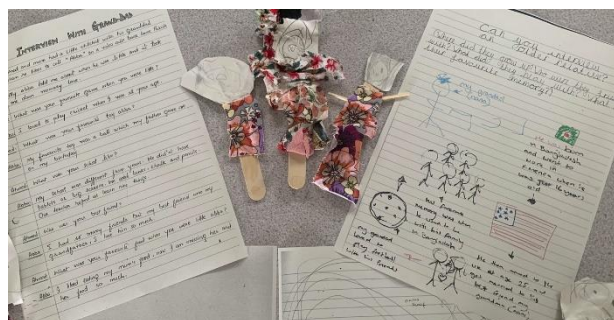
Thursday 2 July 2026 – Year 2 Scarborough Trip

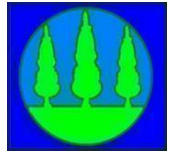
Thursday 9 July 2026 – Reception Hesketh Farm Visit

Friday 17 July 2026 – School closes for Summer Holidays



Thank you to those who joined us for the Voices of the Elders storytelling and sharing of work event. The children themselves shared stories about elder members of their family, giving them a strong sense of pride and awareness of generations past and present. The Global Committee shared their ideas on why family is important. It was a special and emotional event- well done to everyone who took part!

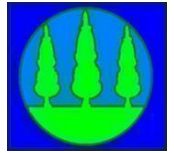




Year 1 Animal Club – 21 May 2026

Ash and Birch class learnt about a range of animals and their habitats.





Back to School Loan Offer

We're pleased to share our **Back to School** Loan offer is back, designed to support individuals and families with limited access to affordable credit.

You can find full details and apply here: [Back to School Loan - BDCU Credit Union](#)

The offer includes a £250 loan and a £50 savings incentive, with £10 paid at the start and £40 on completion, helping individuals cover essential school costs and more while building financial stability.

Key benefits:

- Build credit profile
- Improve financial confidence
- Develop a savings habit



Who it's for:

- Individuals with low credit scores
- New and existing BDCU members – previous Back to School Loans must be fully repaid

What it can be used for:

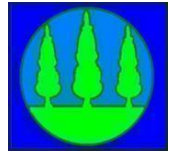
- Cost of uniform, clothing, equipment and more

We'd appreciate your support in sharing this with those who may benefit



Summer 2

MONDAY	Kids With Bricks Club – Reception to Year 4 Multi-Ball Games Club – Year 2
TUESDAY	Multi Sports Club – Year 1 Express to Impress Girls Dance Club – Year 6 Girls Football Club- Year 3-4-5-6 Cricket Club –Year 5-Year 6
WEDNESDAY	Choir High-Five Club - Year 4 and Year 5 Play and Learn Games Club – Reception and Year 1
THURSDAY	STARBOOK Reading Club – Year 3-Year 4 Gardening Club- Year 2
FRIDAY	Football Club – Year 4 Board Games Club – Year 6



New School Meal Menu- commencing 13th April 2026

Week 1: 13th Apr, 4th May, 20th May, 16th Jun, 6th Jul, 27th Jul, 17th Aug, 7th Sep, 28th Sep, 19th Oct

Homemade Bread, selection of seasonal Vegetables / Fresh Salad & Fresh Fruit served daily.
 Selection of cold Sandwiches served daily.

Poplars Farm Primary School Menu

Mon

- ProVeg Beef & Red Lentil Bolognese & Garlic Bread**
Red Tractor Accredited Beef Mince & Lentils in a Tomato & Vegetable Sauce, served with Pasta & Garlic Bread.
- Soya Mince Chili with Rice & Nachos**
Soya Mince in a spicy Tomato Sauce, served with Rice & Nachos.
- American-style Quorn Hot Dog**
Quorn Sausage served in a Bun, with Seasoned Potatoes.
- Assorted Jacket Potatoes / Selection of Sandwiches**
- Lemon Shortcake & Custard**
A hot chocolate fudge with a bit of Lemon, served with Custard.

Tue

- Pork & Apple Whirl**
Red Tractor Accredited Sausage Meat and Apples, encased in Pastry.
- Halal Chicken & Spinach**
Red Tractor Accredited HMC dried Chicken & Spinach in a Tomato based Curry Sauce, served with Pilau Rice / Naan Bread.
- Pomodoro Pasta**
A simple, delicious, rich Tomato Sauce with Beans, served with Crusty Bread.
- Selection of Sandwiches / Hot Sub Roll**
- Sprinkle Cake**
Homemade, infused with Vanilla Sponge, lightly topped with water icing and Sprinkles.

Wed

- Roast Meat Dinner**
Red Tractor Accredited Beef (either Gammon, Turkey or Pork Loin) served with Yorkshire Pudding, Roast Potatoes, Seasonal Veg & Gravy.
- Halal Roast Chicken Breast**
HMC Chicken Breast, served with Yorkshire Pudding, Roast Potatoes & Seasonal Vegetables.
- Golden Cheese Roll**
Cheese mix wrapped in Puff Pastry, served with Creamed Potatoes & Seasonal Vegetables.
- Selection of Sandwiches / Hot Sub Roll**
- Decorated Fruit Jelly**
Jelly with Fruit, topped with Fresh Cream.

Thu

- MSC Breaded Fish Fillet Fingers**
MSC Fish Fillet Fingers, served with Chips / Jacket Wedges.
- MSC Salmon & Sweet Potato Fricassee**
MSC Salmon & Sweet Potato, served with Chips / Jacket Wedges.
- Arrabbiata Pasta**
Chilli Tomato Sauce with Lentils & Peppers, served with Pasta & Crusty Bread.
- Assorted Jacket Potatoes / Selection of Sandwiches**
- Chocolate Sponge & Chocolate Sauce**
Homemade, light Chocolate Sponge, served with Chocolate Sauce.

Fri

- Classic Cheese & Tomato Pizza**
Wholemeal 50/50 base, topped with a lightly spiced Sauce and topped with Mozzarella / Cheddar Cheese, served with Chips / Jacket Wedges.
- Baked Tortilla Wrap with Julienne of Veg**
Vegetables in a Sauce, topped with Cheese in a Tortilla wrap. Served hot with Chips / Jacket Wedges.
- Assorted Jacket Potatoes / Selection of Sandwiches**
- Vanilla Cookie Custard Flavoured Cookie.**

FM CATERING SERVICES

Week 2: 20th Apr, 11th May, 1st Jun, 22nd Jun, 13th Jul, 3rd Aug, 24th Aug, 14th Sep, 8th Oct, 28th Oct

Homemade Bread, selection of seasonal Vegetables / Fresh Salad & Fresh Fruit served daily.
 Selection of cold Sandwiches served daily.

Poplars Farm Primary School Menu

Mon

- ProVeg Mild Chicken Curry**
Indian inspired chicken, Red Tractor Accredited Potato & Vegetable Curry, served with Roast Rice.
- ProVeg Creamy Mac & Cheese**
A Mashed Pasta dish, coated in a creamy Mature Cheddar Sauce, served with crusty Bread.
- Mascarpone Pasta**
A creamy Sauce with Tomatoes, Mascarpone Cheese and Herbs, served with Crusty Bread.
- Assorted Jacket Potatoes / Selection of Sandwiches**
- Paris Sandwich**
A light, sweet Pastry with Jam, sandwiched in between, served with Custard.

Tue

- Super Savoury Roll**
Flaky Puff Pastry with a seasoned filling, served with Seasoned Potatoes.
- Homemade BBQ Quorn with Rice**
Quorn Pieces in a Barbecue Flavoured Tomato Sauce, served with Rainbow Rice.
- Assorted Jacket Potatoes / Selection of Sandwiches / Hot Sub Roll**
- Peaches & Ice Cream with Syrup**
Vanilla Ice Cream with Topped Peach Sauce, with a Chocolate Flavoured Syrup.

Wed

- Roast Meat Dinner**
Red Tractor Accredited Beef (either Gammon, Turkey or Pork Loin) served with Yorkshire Pudding, Roast Potatoes, Seasonal Veg & Gravy.
- Halal Roast Chicken Breast**
Red Tractor Accredited HMC Chicken Breast, served with Yorkshire Pudding, Roast Potatoes & Vegan Gravy.
- Toad in the Hole**
Quorn Sausage, baked in a light Baking, served with Roast Potatoes.
- Selection of Sandwiches / Hot Sub Roll**
- Lemon Drizzle**
A Fuffy Lemon Sponge with King Onions, served with optional Custard.

Thu

- Beef Burger in a Bun**
Red Tractor Accredited Beef & Spinach Burger, served in a Bun with Chips / Baked Potato Wedges.
- Halal Chicken Burger in a Bun**
Red Tractor Accredited HMC Chicken Burger, served in a Bun with Salad and Chips / Jacket Wedges.
- Quorn Pattie Burger in a Bun**
Quorn Sausage-style Pattie, served in a Bun with Chips / Baked Potato Wedges / Chips.
- Pomodoro Pasta**
A simple, delicious, rich Tomato Sauce with Beans, served with Crusty Bread.
- Assorted Jacket Potatoes / Selection of Sandwiches**
- Marble Sponge & Chocolate Sauce**
Homemade, Sponge with hints of both Vanilla & Chocolate Cake, served with Chocolate Sauce.

Fri

- Tuna & Sweetcorn Pizza**
Wholemeal 50/50 base, topped with a lightly spiced Sauce and topped with Mozzarella / Cheddar Cheese & Tuna, served with Chips / Jacket Wedges.
- Classic Cheese & Tomato Pizza**
Wholemeal 50/50 base, topped with a lightly spiced Sauce and topped with Mozzarella / Cheddar Cheese, served with Chips / Jacket Wedges.
- Assorted Jacket Potatoes / Selection of Sandwiches**
- Gillydale Biscuits**
Homemade, crumbly Gilly Biscuits.

FM CATERING SERVICES

Week 3: 27th Apr, 18th May, 8th Jun, 29th Jun, 20th Jul, 10th Aug, 31st Aug, 21st Sep, 12th Oct, 2nd Nov

Homemade Bread, selection of seasonal Vegetables / Fresh Salad & Fresh Fruit served daily.
 Selection of cold Sandwiches served daily.

Poplars Farm Primary School Menu

Mon

- ProVeg Rich & Creamy Meat Lasagne**
Red Tractor Accredited Beef Mince in a rich Tomato Sauce with Vegetables, Herbs & Garlic, layered with Pasta Sheets & a Creamy Cheese Sauce, served with Garlic Bread.
- Rich & Creamy Vegetarian Mince Lasagne**
Boya Mince & Vegetables in a rich Tomato Sauce with Vegetables, Herbs & Garlic, layered with Pasta Sheets & a Creamy Cheese Sauce, served with Garlic Bread.
- Homemade BBQ Quorn with Rice**
Quorn Pieces in a Barbecue Flavoured Tomato Sauce, served with Rainbow Rice.
- Assorted Jacket Potatoes / Selection of Sandwiches**
- Flapjack**
A sweet but moist with Oats, Golden Syrup & Butter.

Tue

- Traditional Chicken Pie**
Red Tractor Accredited dried Chicken Pieces in a rich Gravy with Vegetables, topped with a Golden Pastry Lid served with Potatoes.
- Golden Cheese Whirl**
Cheese, Potato & Onion, encased in Puff Pastry, served with Seasoned Potatoes.
- Arrabbiata Pasta**
Chilli Tomato Sauce with Lentils & Peppers, served with Pasta & Crusty Bread.
- Assorted Jacket Potatoes / Selection of Sandwiches / Hot Sub Roll**
- Strawberry Sponge & Custard**
Homemade, light Vanilla Sponge with a Strawberry Jam Sauce, served with Custard.

Wed

- Sausage Pie**
Red Tractor Accredited Sausage in a Gravy, topped with Potatoes, served with Yorkshire Pudding.
- Halal Roast Chicken Breast**
Red Tractor Accredited HMC Chicken Breast, served with Yorkshire Pudding, Roast Potatoes & Vegan Gravy.
- Quorn Roast Dinner**
Served with Yorkshire Pudding, Roast Potatoes, Seasonal Vegetables & Vegan Gravy.
- Selection of Sandwiches / Hot Sub Roll**
- Pears & Ice Cream with Syrup**
Vanilla Ice Cream with Topped Pear Sauce, with a Chocolate Flavoured Syrup.

Thu

- MSC Breaded Fish Fillet Fingers**
MSC Fish Fillet Fingers, served with Chips / Jacket Wedges.
- Vegetable Fricassee**
Mixed Vegetables & Onion coated in Tempura Batter, served with Chips / Baked Jacket Wedges & Rata.
- Assorted Jacket Potatoes / Selection of Sandwiches**
- Chocolate Sponge & Chocolate Sauce**
Homemade, light Chocolate Sponge, served with Chocolate Sauce.

Fri

- Classic Cheese & Tomato Pizza**
Wholemeal 50/50 base, topped with a lightly spiced Sauce and topped with Mozzarella / Cheddar Cheese, served with Chips / Jacket Wedges.
- Mini Power Ball Pizza**
Wholemeal 50/50 base topped with a lightly spiced Sauce, and topped with Mozzarella / Cheddar Cheese & Muesli Balls, served with Chips / Jacket Wedges.
- Assorted Jacket Potatoes / Selection of Sandwiches**
- Butterfly Buns**
Assorted Sponge-cased Buns.

FM CATERING SERVICES

ASK YOURSELF

Why aren't you choosing a school meal?

Across the country, a significant number of pupils almost 1 in 4 are not choosing a school meal. Whether paid or free, this means many children in our area are missing out on healthy, balanced food that supports their learning, wellbeing, and development.

FM Catering are looking to work in partnership with schools and academy trusts to address these shortfalls and improve uptake levels. The initial step will be to do a joint survey of the school's parents to identify the reasons why they are not taking up a school meal, and then FM Catering will develop and agree a bespoke action plan with our schools designed to increase meal uptake.

BENEFITS OF A SCHOOL MEAL

- Improves overall health and learning outcomes
- Nutritious, freshly prepared food with hot and cold options
- Promotes healthy food choices and food education
- Provides hot choices on cold days and cold choices on hot days!
- Theme days to support curriculum activities and calendar events
- Families save approximately £37 per month in total on food spending. (based on a household with two adults and two primary-aged children) *
- Religious, medical and food allergen diets are catered for
- Pupils wanting a packed lunch (FM can provide packed lunch choices with the 'select and fill your packed lunch' option)

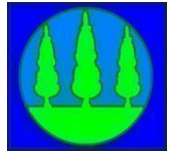
Scan the QR code to let us know your thoughts on school meals

FM SERVICES

Increasing Uptake of School Meals-School Lunch Survey for Parents

Please click on the link below to have your say.

<https://online1.snapsurveys.com/irhg5c>



Wraparound Care - Breakfast Club and Afterschool Club:

Breakfast Club is for pupils in Nursery (ONLY 4 years old and above), Reception to Year6. It runs daily from 7.45am until the start of school. Our After School Club runs daily for pupils from Reception to Year 6 from 3.15 pm until 6 pm.

Children who are in receipt of PPG are attending the breakfast club at no cost.

If you would like your child to attend the after-school club provision, please email the school office, office@poplarsfarm.bradford.sch.uk stating your child/children's names, classes and dates you would like your child to attend the provision including their pick up

(FSM children no charge, this does not include UIFSM)

Afterschool Club - 3:15 pm - 4:30 pm collection -£4.00 per session which includes a drink and light snack Afterschool Club - 15:15 pm up to 18:00 pm collection - £6.00 per session which includes tea.

Our charges still remain much lower than other provisions! Please keep payment up to date.

All payments must be made in advance on ParentPay for a child attending our Wrap-Around care.

Please see a member of the officestaff if you need support with this.

SCHOOL MILK PROVIDERS - Our school milk company, COOL MILK

Please find ourmilk company's Details for your information. Your child is eligible for free school milk if they are under 5 years old or eligible for free school meals.

If you would like your child to have milk in school, please go to www.coolmilk.com and register your child.

Please note that following the registration of your child, it might take up to 2 weeks for the company to process your order before your child starts to have milk in school.

Community Linkage

